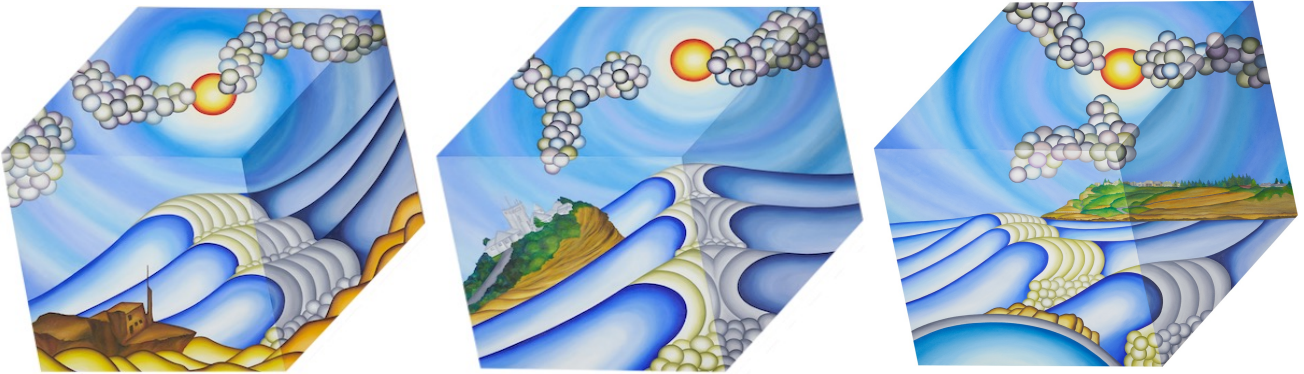


Mindcraft



Originally as part of the **INTER/SECTION**
exhibit by the View3 artists at
Back To Back Gallery
57 Bull St, Cook Hill Newcastle 2300
9 – 25 September, 2022

Now on exhibit at
School of Information and Physical Sciences
University of Newcastle, Callaghan NSW 2308



KEITH NESBITT
KEITH NESBITT

www.knesbitt.art

kvnesbitt1959@gmail.com

INTER / SECTION

presented by View3 Artists

**CHRIS
BULLER**
@chrisbullerart



**KEITH
NESBITT**
@knesbittart



**PAUL
FOLEY**
@lightmoods



September 9 to 25

Opening 6-8pm Friday September 9th

Back to Back Galleries

57 Bull St, Cooks Hill, Newcastle

Friday, Saturday, Sunday 11am - 5pm

Artist Talks each Sunday at 2pm



NEWCASTLE
STUDIO
POTTERS Inc.

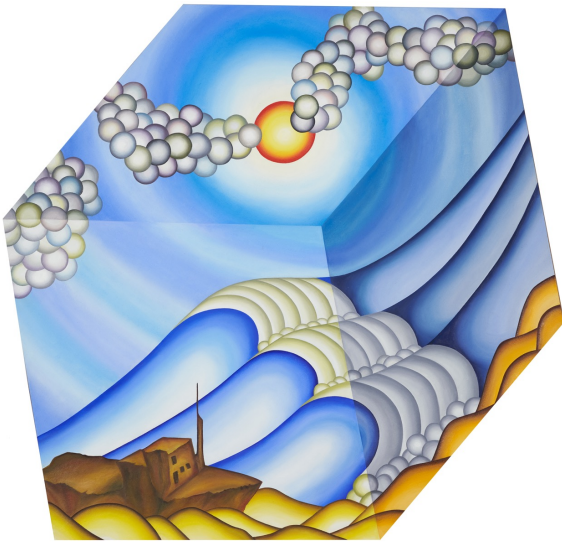
BACK to BACK
GALLERIES

The
Gallery Shop

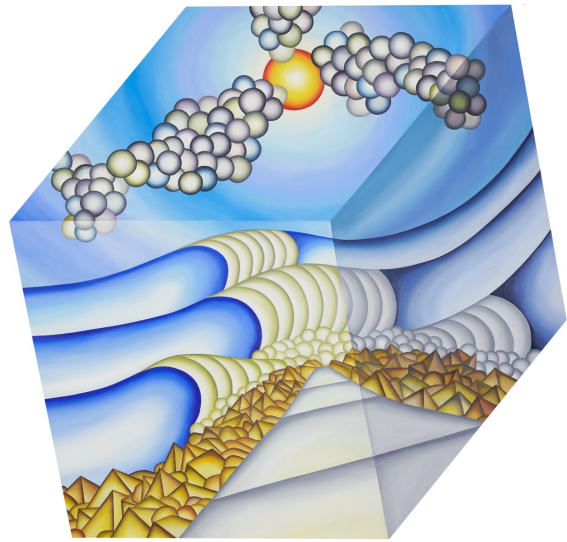


Mindcraft

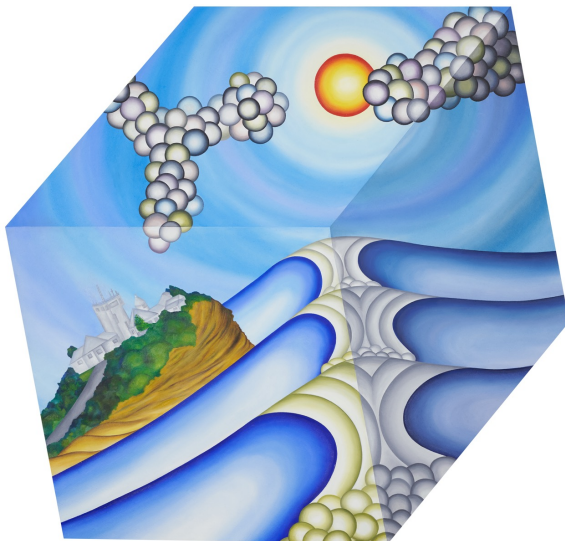
My art, my mind's craft, seems to come from hidden creative forces, driven by waves that flicker between two opposite and incompatible viewpoints. I would really like to have a single viewpoint and merge my two opposite views. But unfortunately, they cannot exist together. There is no intersection of the opposites. I find myself always alternating, flicking between two opposite views. My mind is full of waves trying to resolve these distinct frames of reference, crafting solutions to this ambiguity. I think this is also what makes me creative; trying to resolve the never-ending problem of so many unresolvable opposites in my mind.



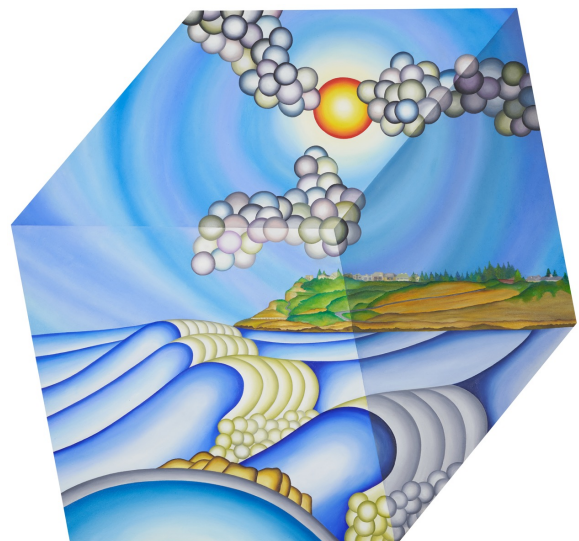
Shipwreck (Stockton)



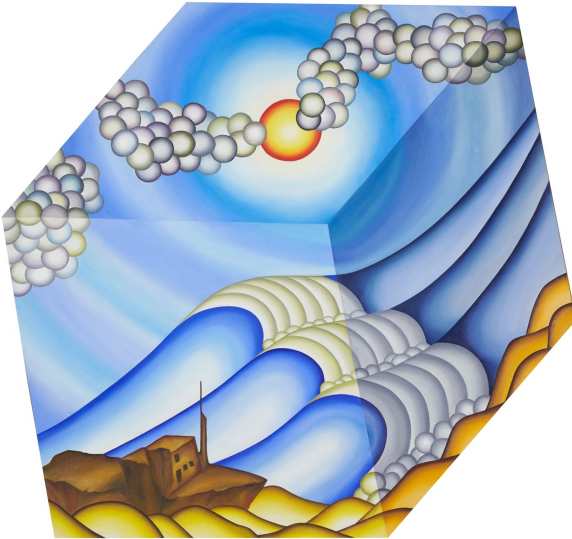
Harbour (Newcastle Harbour)



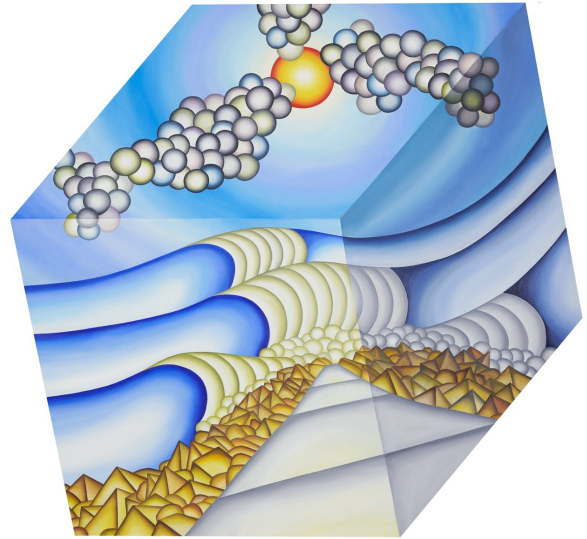
Lighthouse (Nobbys Beach)



Pool (World Pool Newcastle)



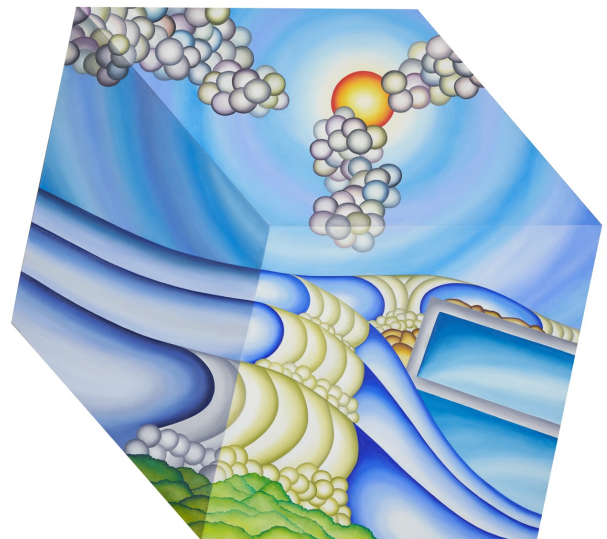
Shipwreck (Stockton)



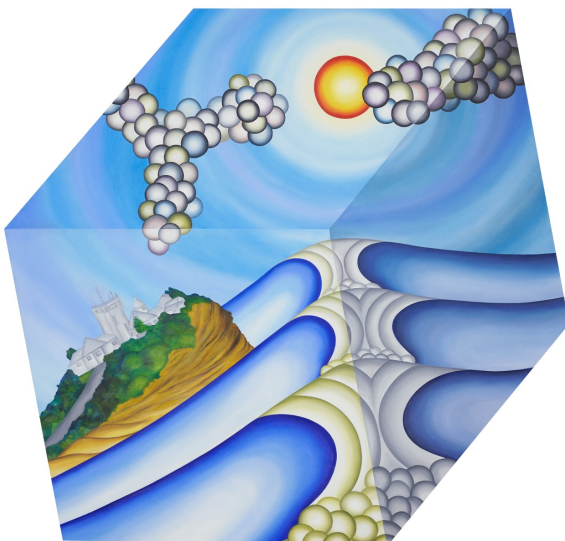
Harbour (Newcastle Harbour)



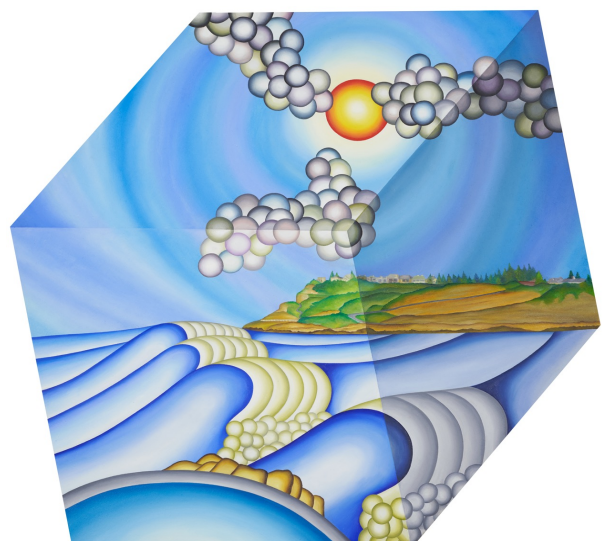
Flags (Bar Beach)



Baths (Merewether Beach)

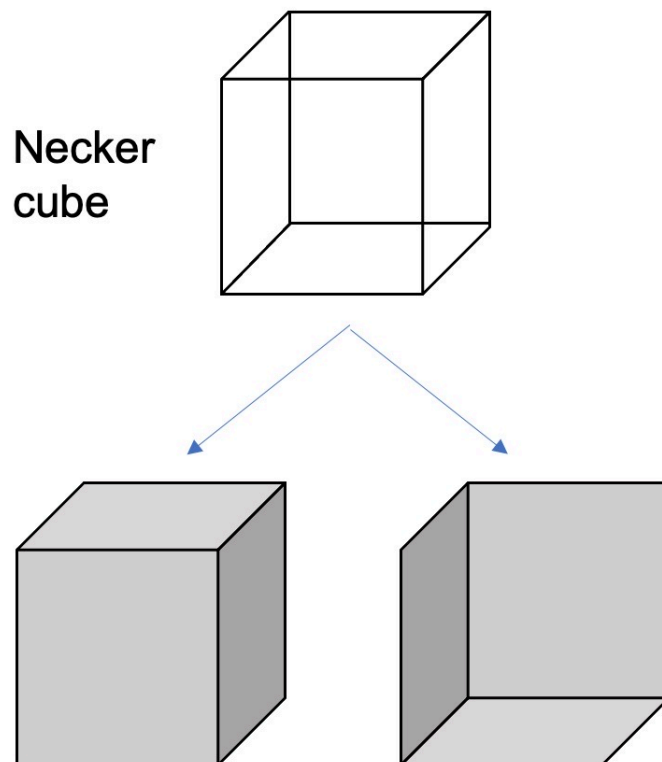


Lighthouse (Nobbys Beach)



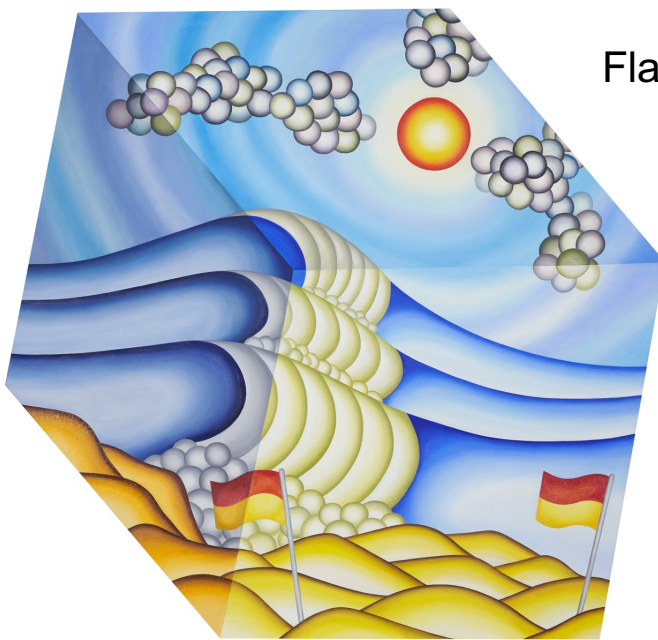
Pool (World Pool Newcastle)

The cube like structure to each of these six works reminded me of the blocks in the creative game of Minecraft (something my children love to play). I like to play too, so I playfully named this group of block-shaped paintings my "*Mindcraft*" series. Many people are surprised to find that some of my canvases can be so oddly shaped. Shouldn't art come painted on rectangles? For me, the shaped canvases are a constant reminder that we should always challenge our frame of reference. The shape of these pictures is also my personal homage to the Necker Cube. The Necker Cube is a well-known optical illusion; a bistable form, that tends to flicker between two different perceptual interpretations. When you look at the Necker cube it can be interpreted in two quite distinct ways. Try as you might, you can only see the cube in one orientation at a time.

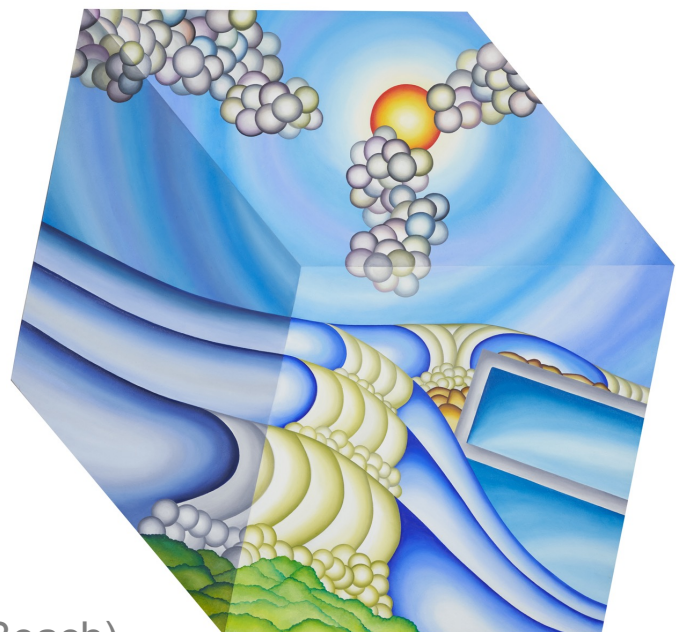


Two possible perceptual interpretations
(but only one at a time)

With the Necker cube, you cannot merge the two forms, rather your perceptions must alternate between the two opposite views. Likewise, in this series of work, I would like the viewer to flicker between two worlds. There is the real world of the six iconic Newcastle coastal locations and then my own, more imaginary internal world. My imaginary world seems to reflect these coastal locations in a very abstract way. Clouds are real world things, but in these pictures, they seem quite child-like and imaginary. Is what we see real or just imagined? The waves in these pictures represent real-world waves but also my own internal mental waves, flickering between opposites. There are other ambiguities presented in the work. The pictures are flat two-dimensional painted objects but can also seem like three-dimensional sculptural works. Of course, these various types of ambiguities have a long history of study in the art world.

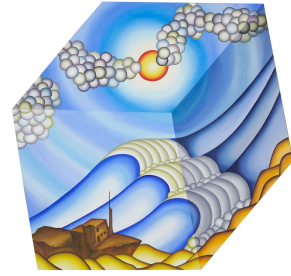
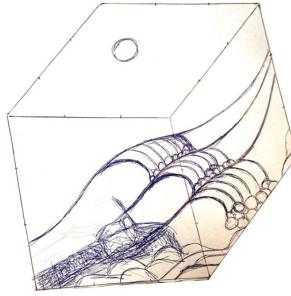


Flags (Bar Beach)

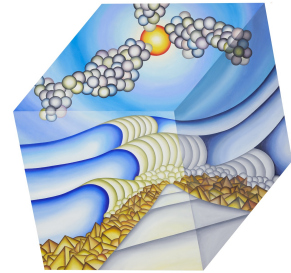
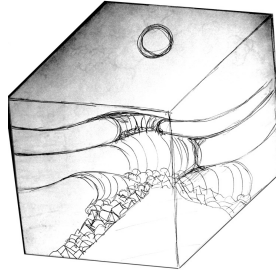


Baths (Merewether Beach)

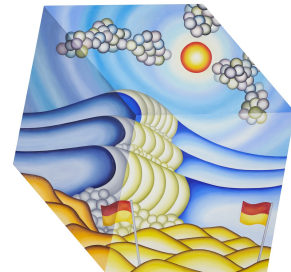
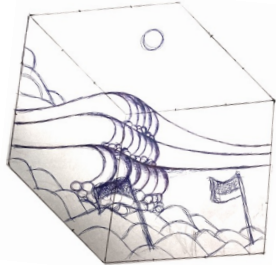
Shipwreck (Stockton Beach)



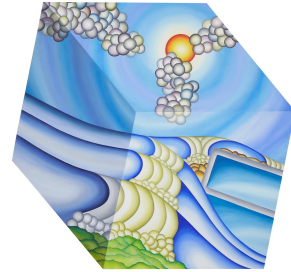
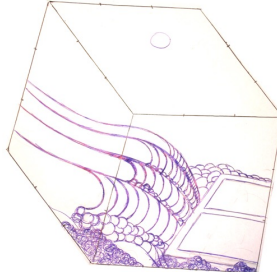
Harbour (Newcastle Harbour)



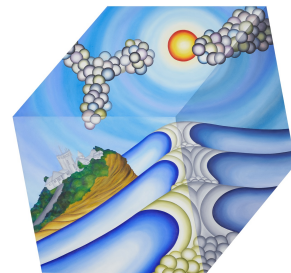
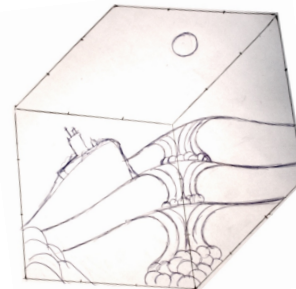
Flags (Bar Beach)



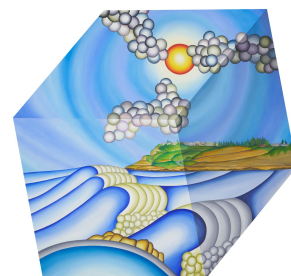
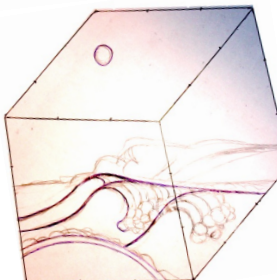
Baths (Merewether Beach)



Lighthouse (Nobbys Beach)

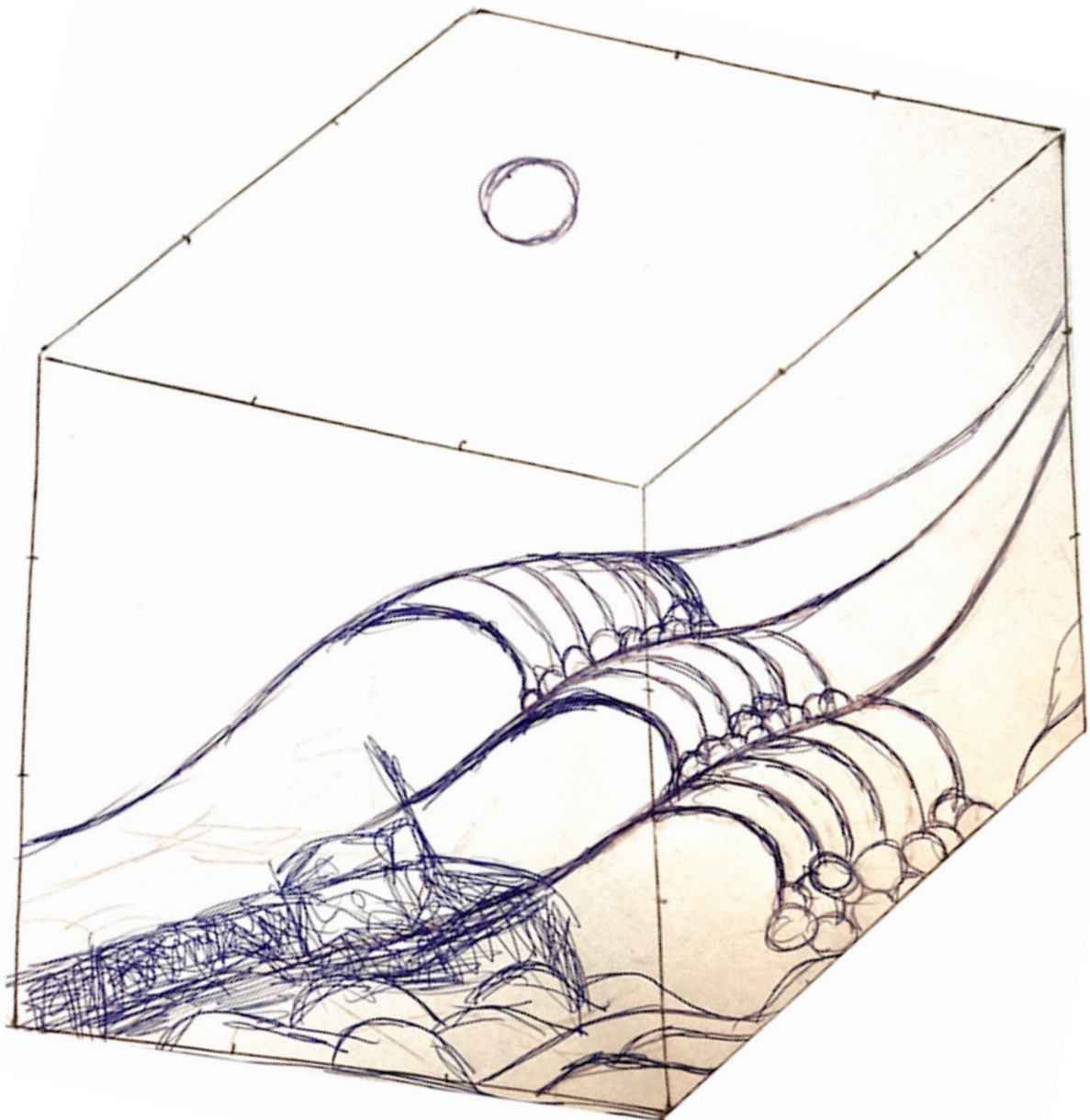


Pool (World Pool Newcastle)

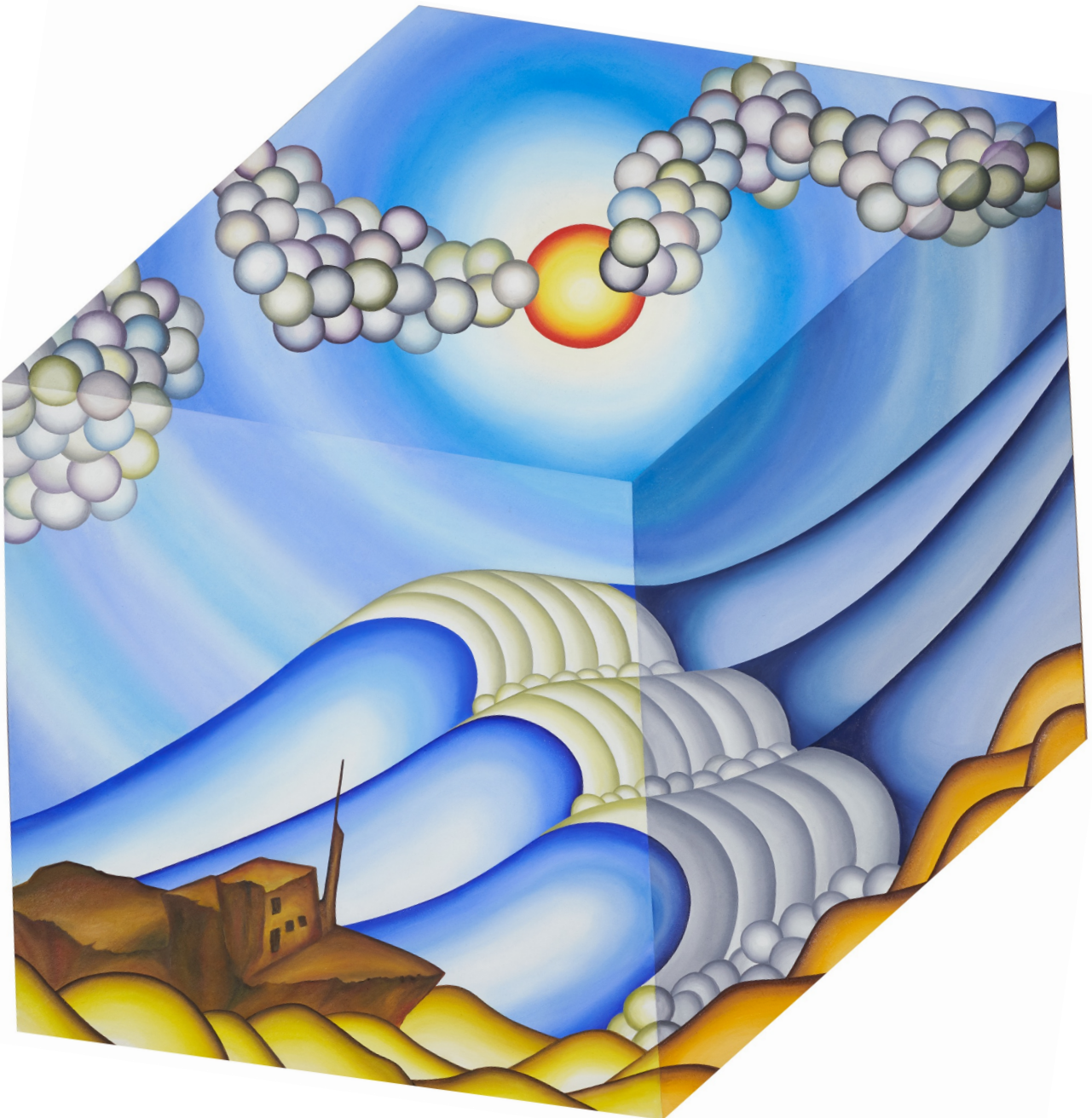


Shipwreck

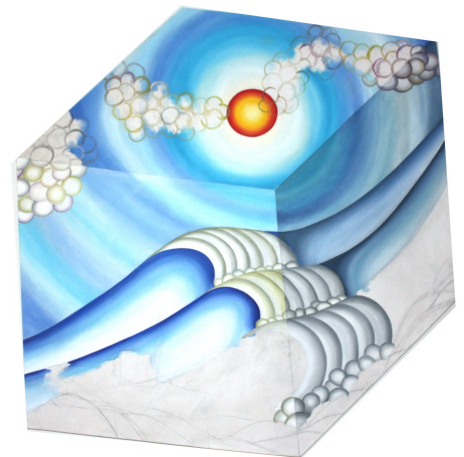
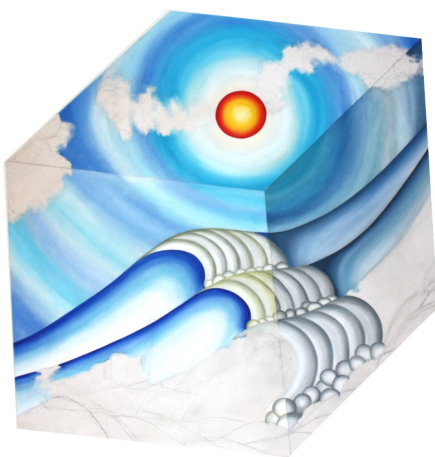
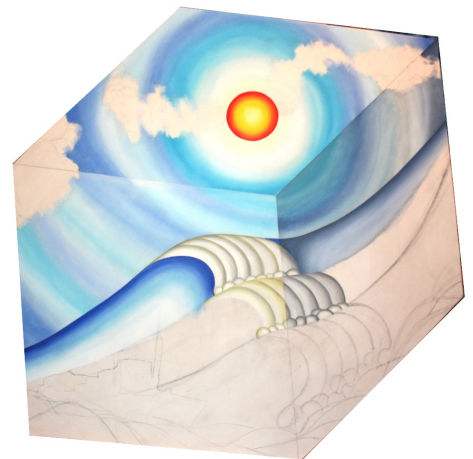
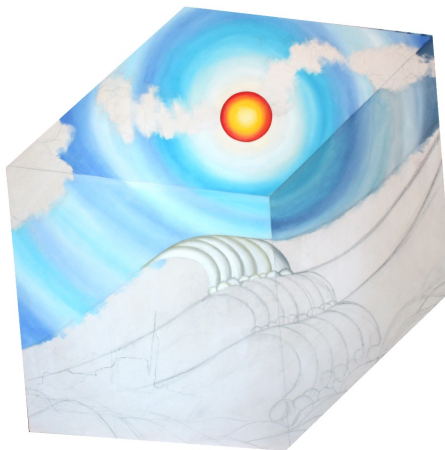
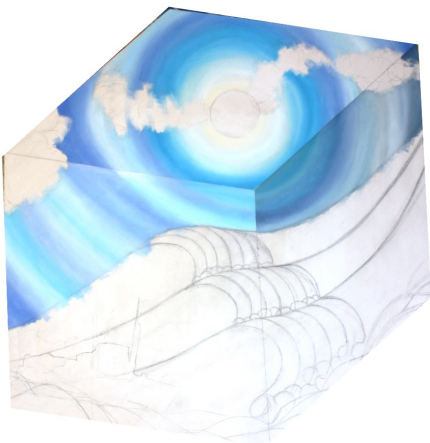
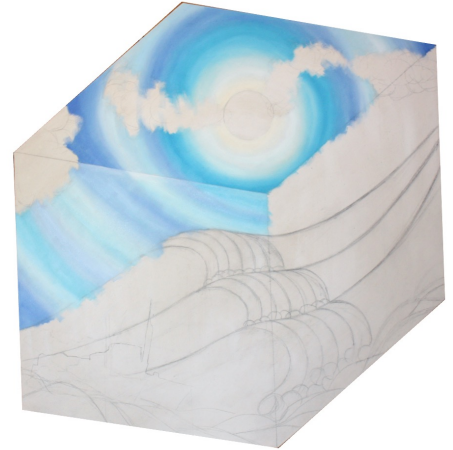
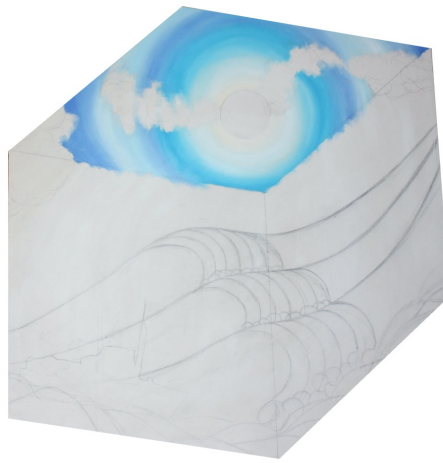
Based on Stockton Beach and what remained
of the Sygna Wreck around 2010



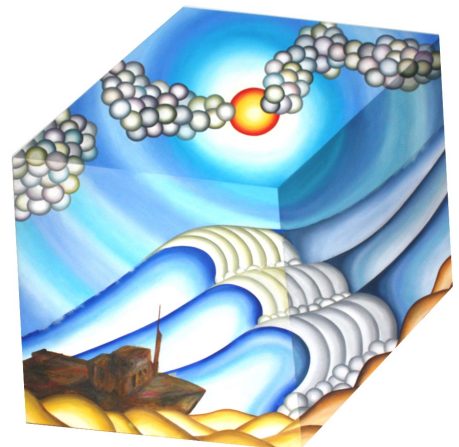
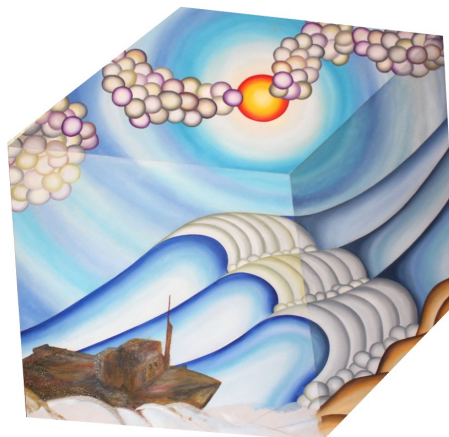
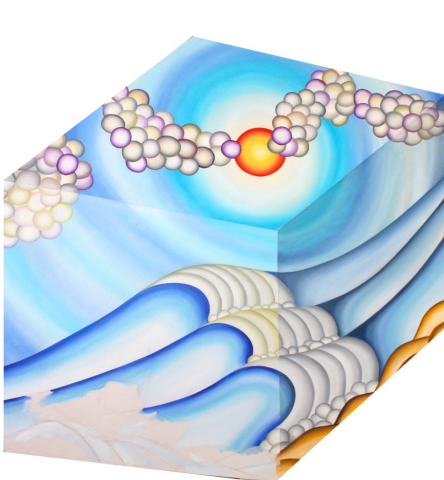
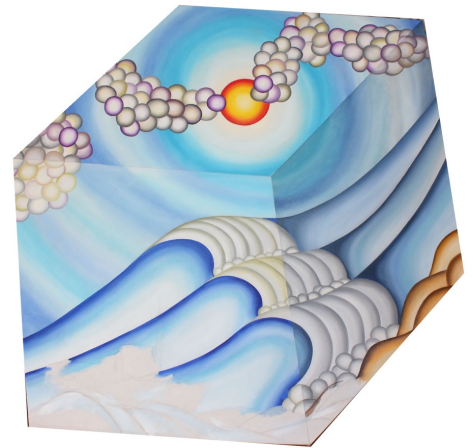
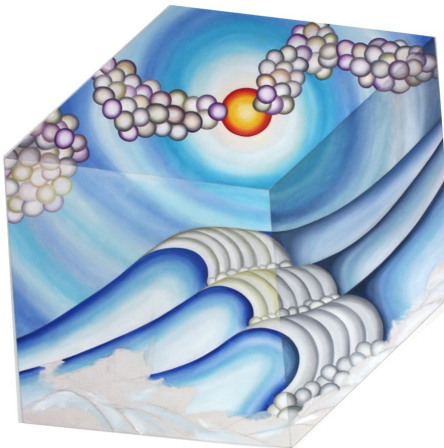
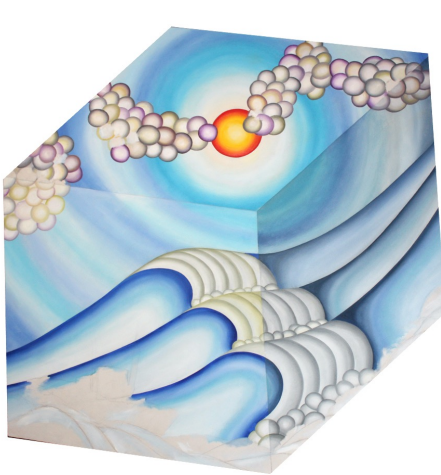
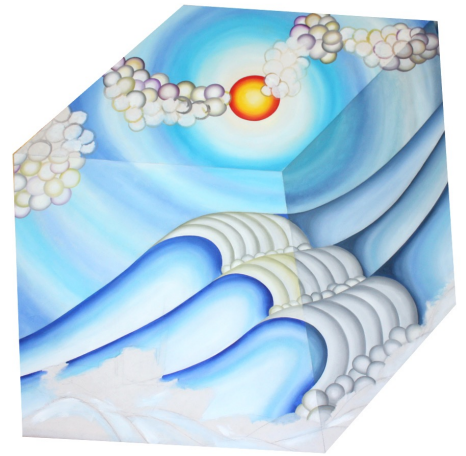
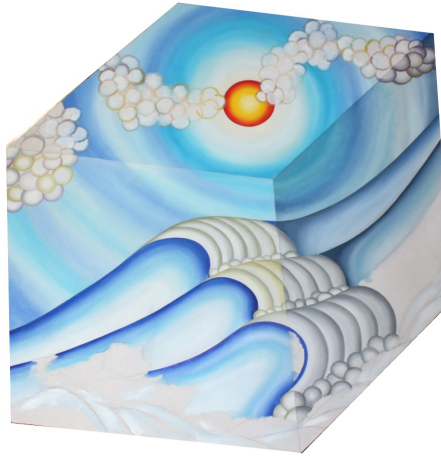
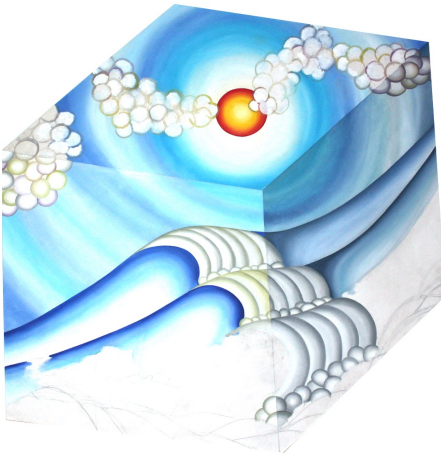
Shipwreck



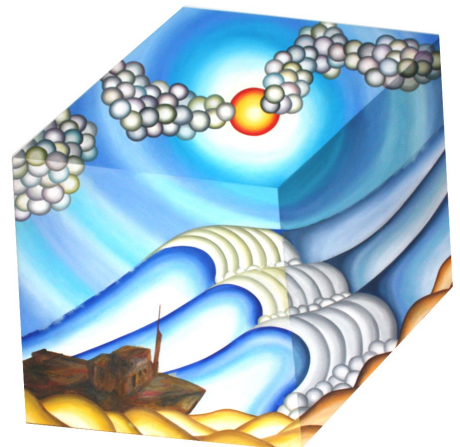
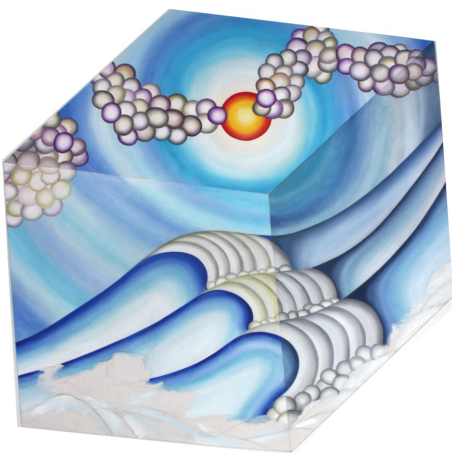
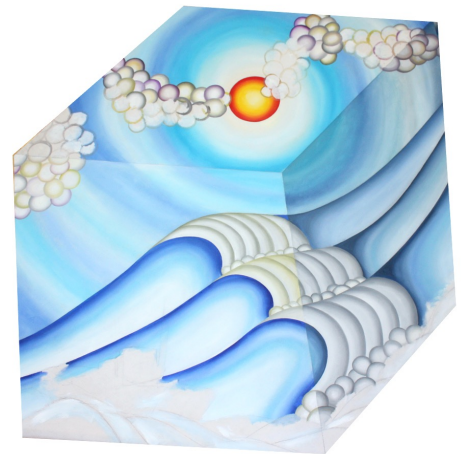
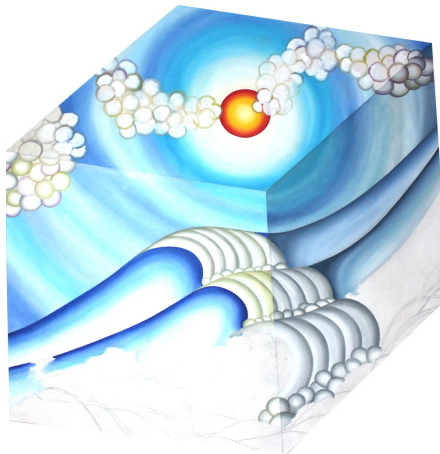
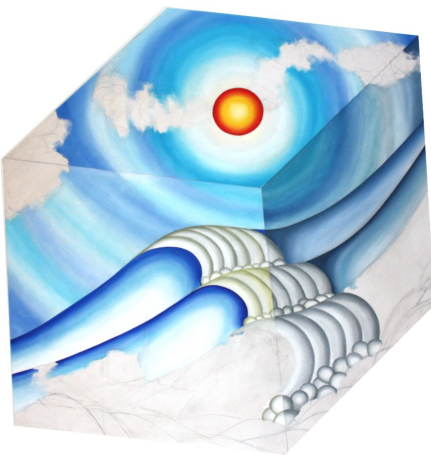
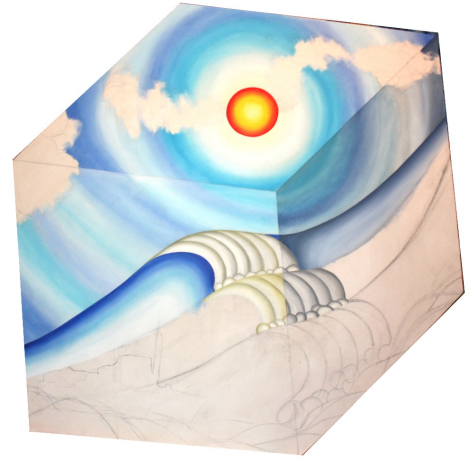
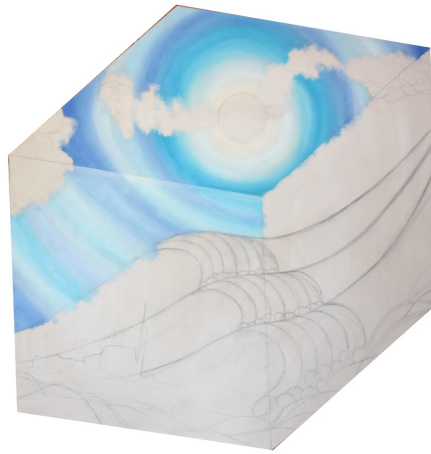
Each picture in the exhibit is painted twice. These photos show the various stages of the first painting of Shipwreck. After the first painting the various parts are painted a second time.



Each picture takes around 200-250 hours to finish.

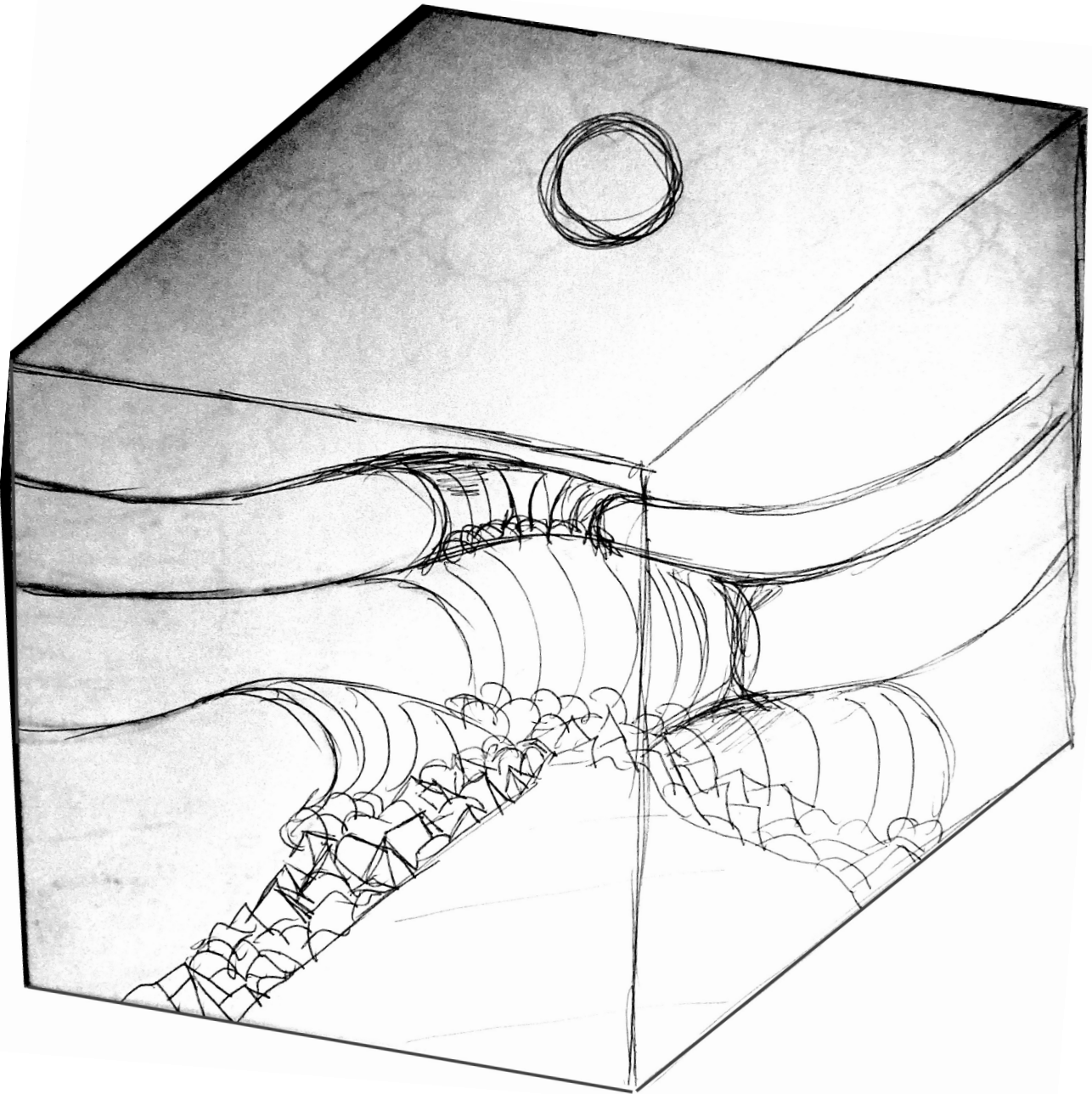


Each picture takes around 200-250 hours to finish.

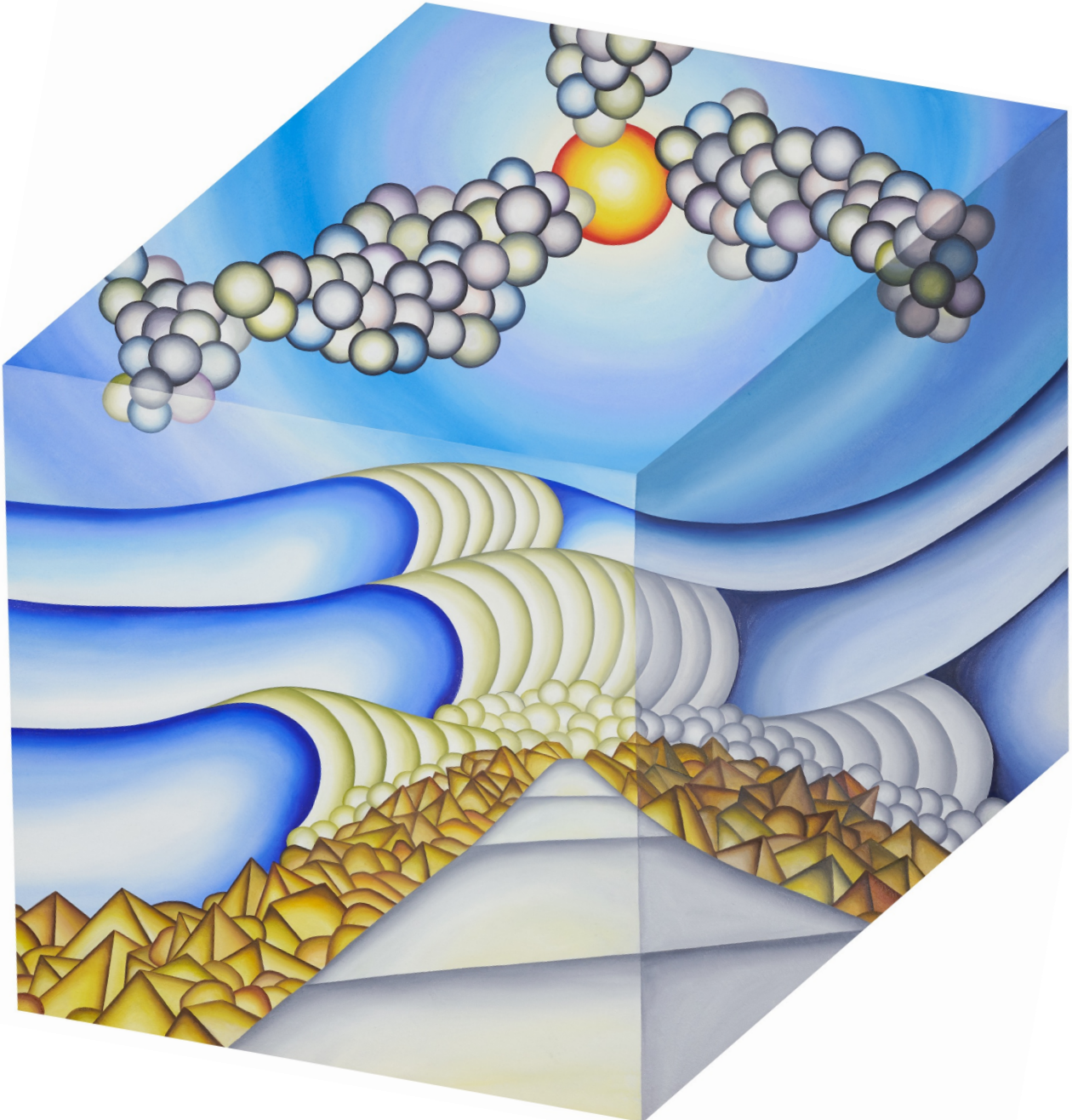


Harbour

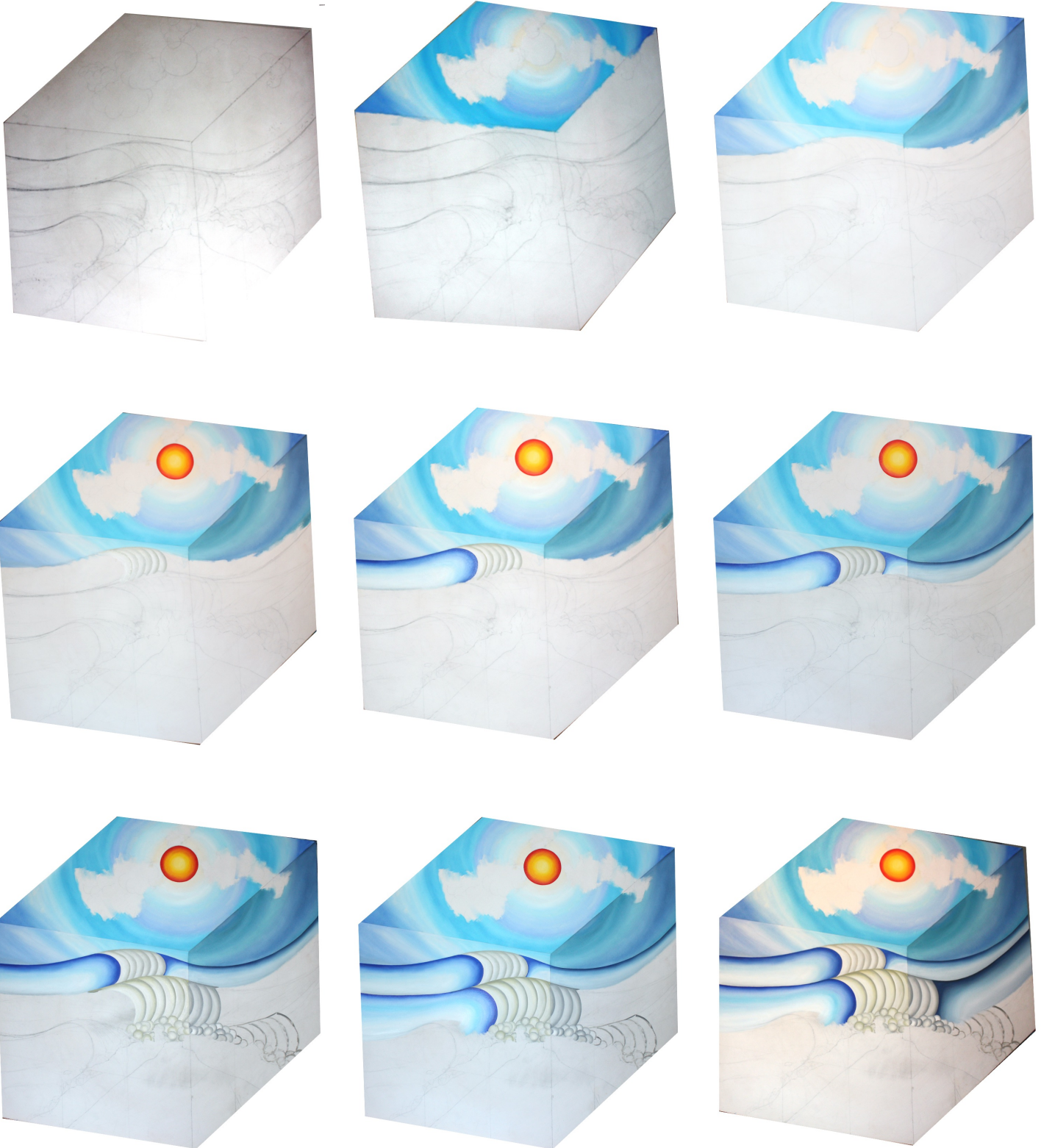
Based on South Wall of Newcastle Harbour



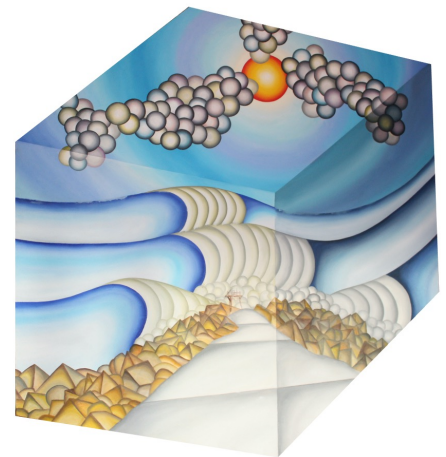
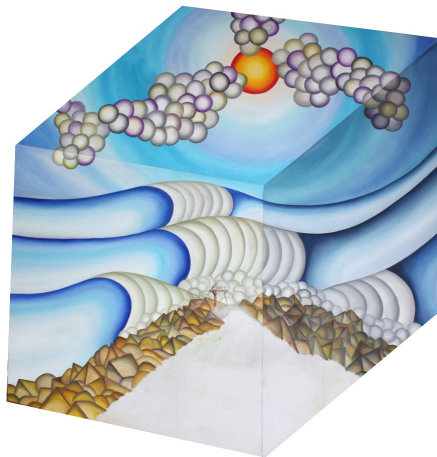
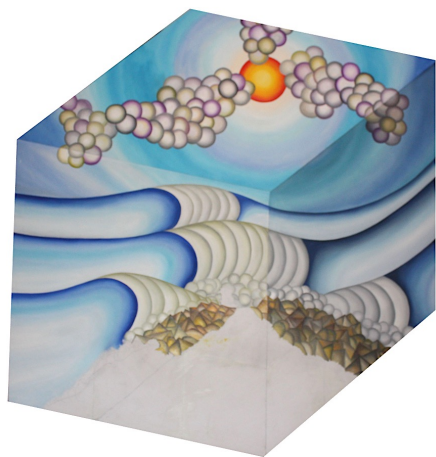
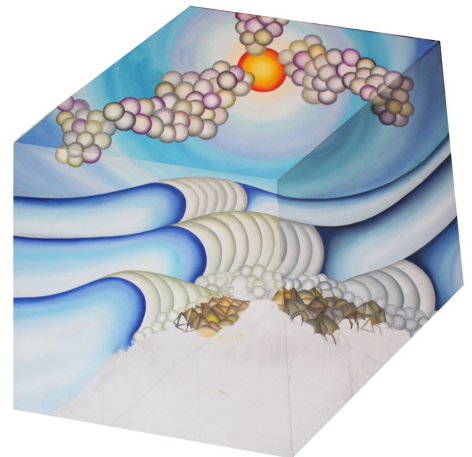
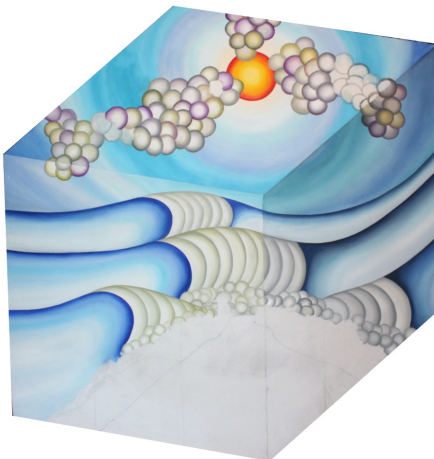
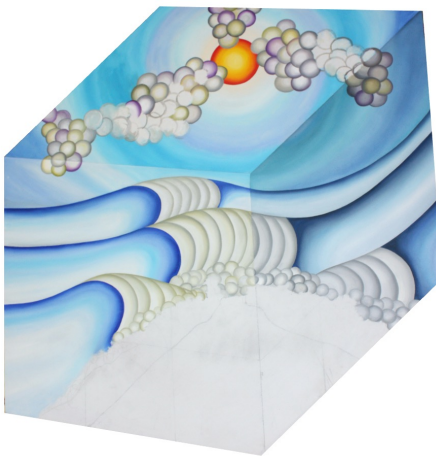
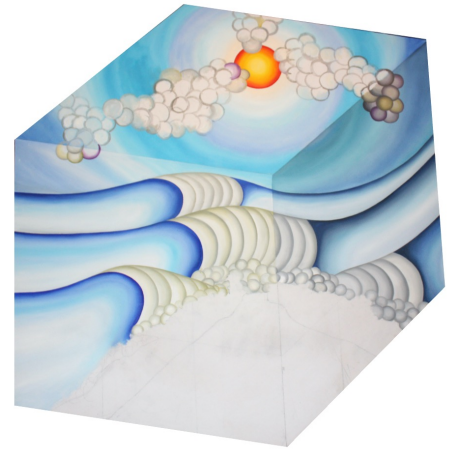
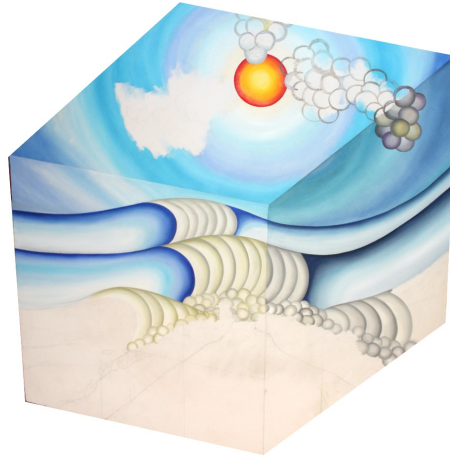
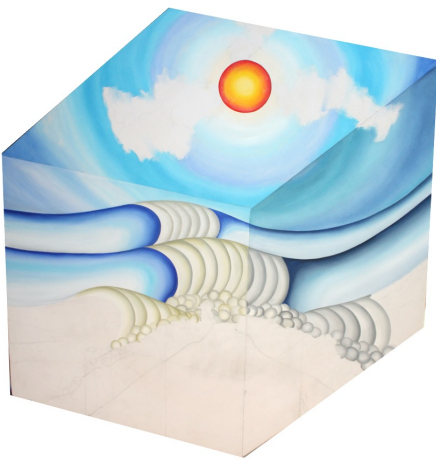
Harbour



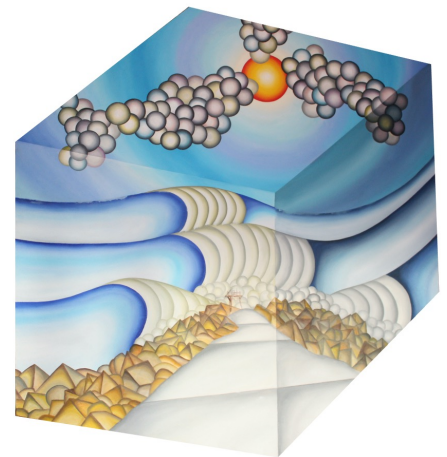
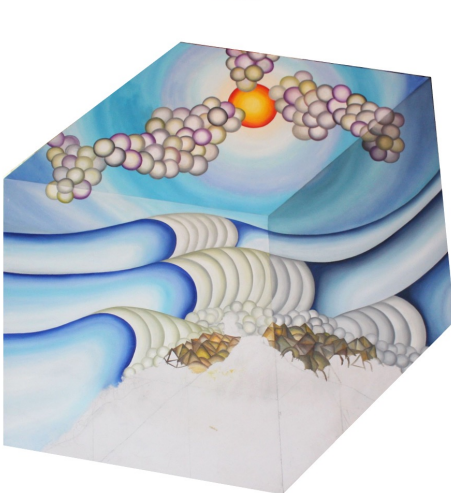
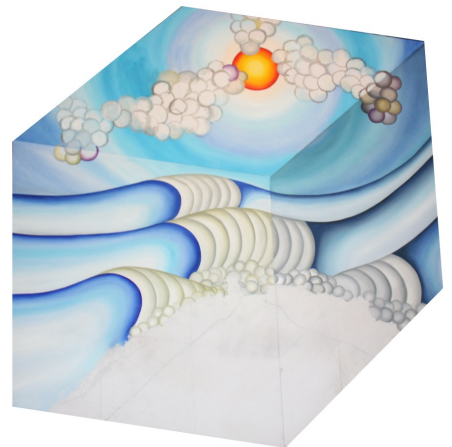
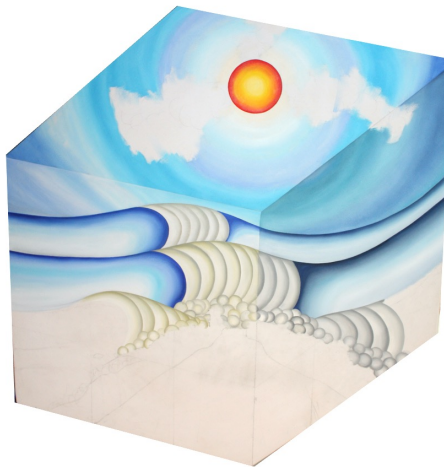
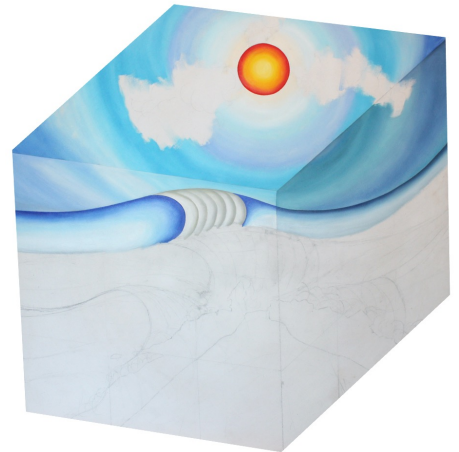
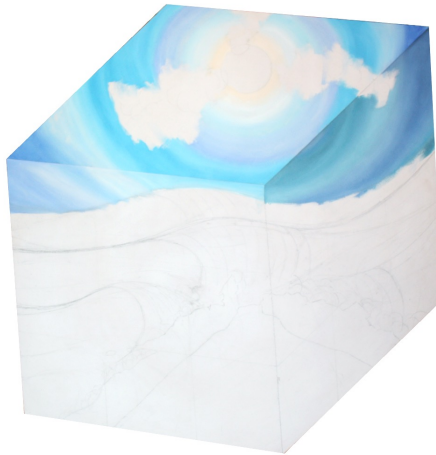
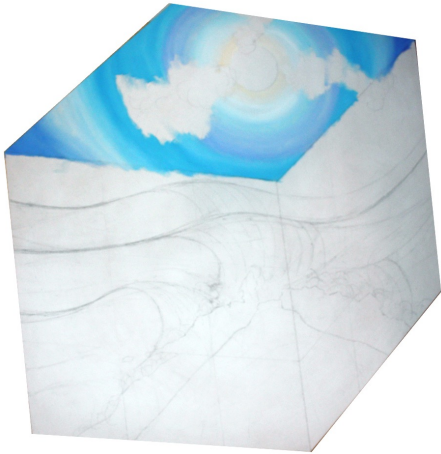
Each picture in the exhibit is painted twice. These photos show the various stages of the first painting of Harbour. After the first painting the various parts are painted a second time.



Each picture in the exhibit is painted twice. These photos show the various stages of the first painting of Shipwreck. After the first painting the various parts are painted a second time.

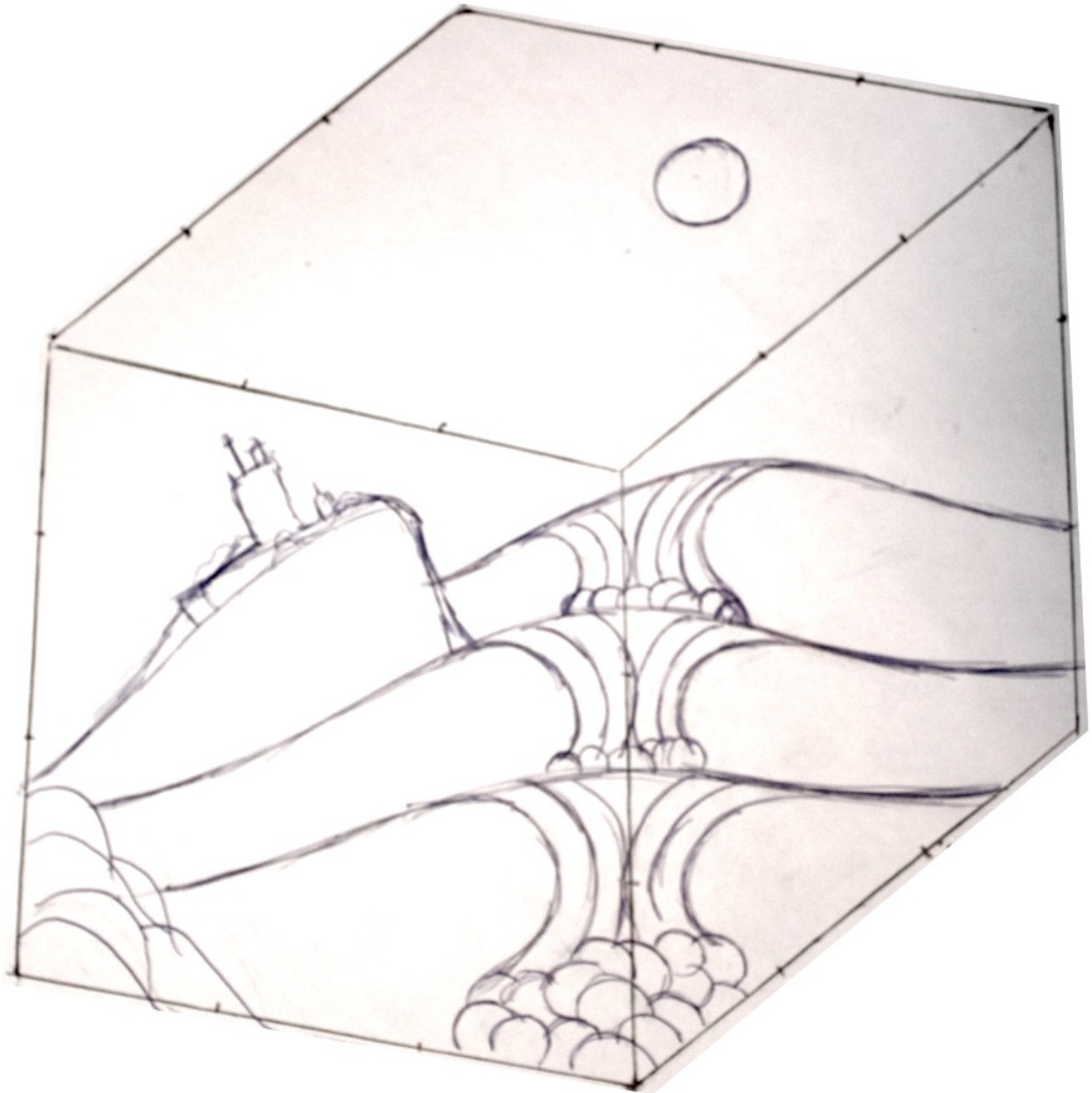


Each picture in the exhibit is painted twice. These photos show the various stages of the first painting of Shipwreck. After the first painting the various parts are painted a second time.

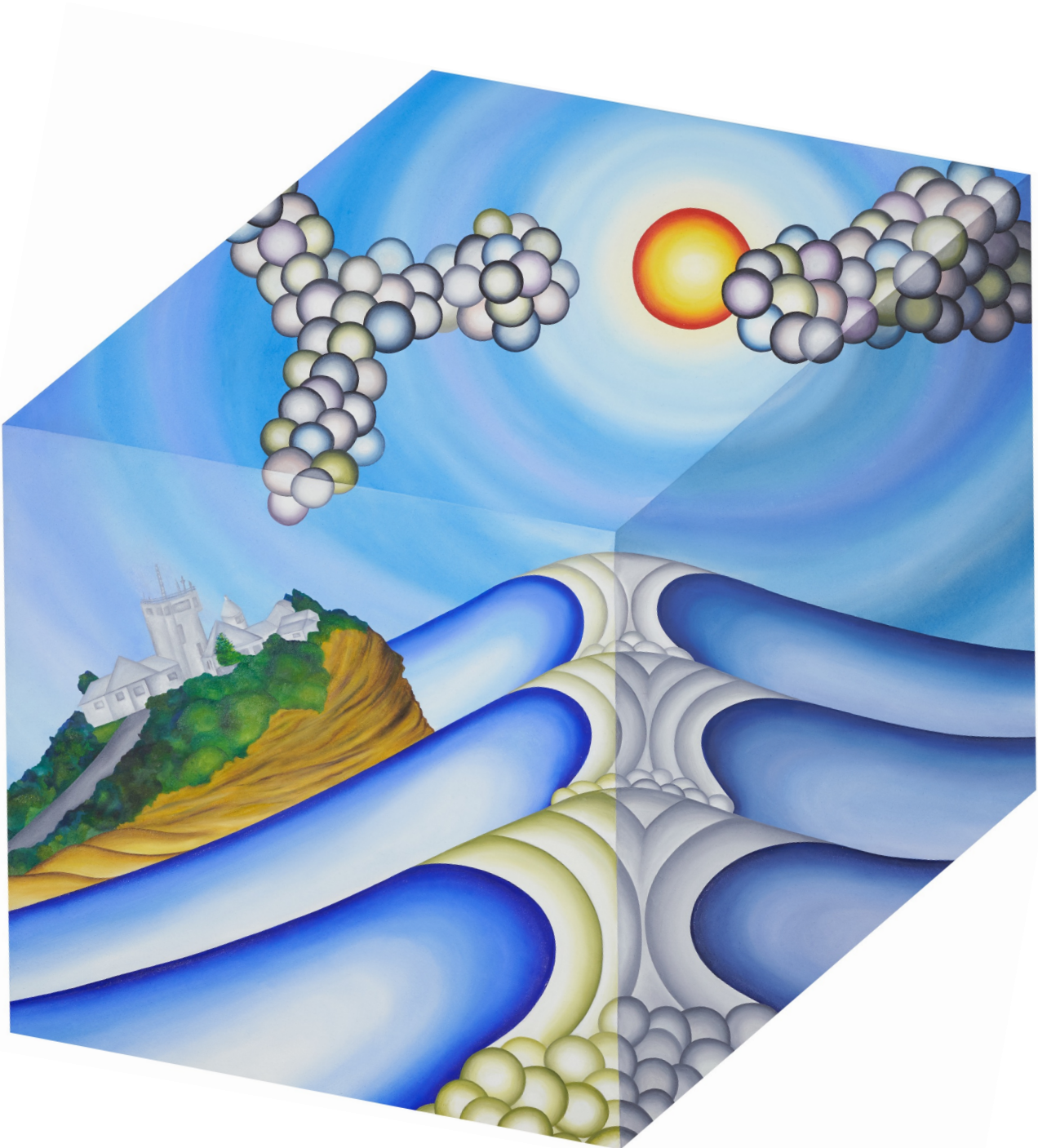


Lighthouse

Based on the Lighthouse at Nobby's Beach



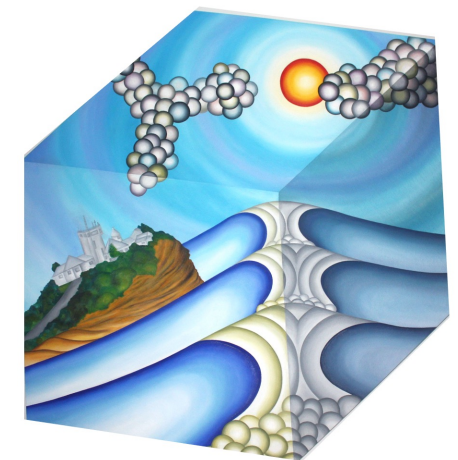
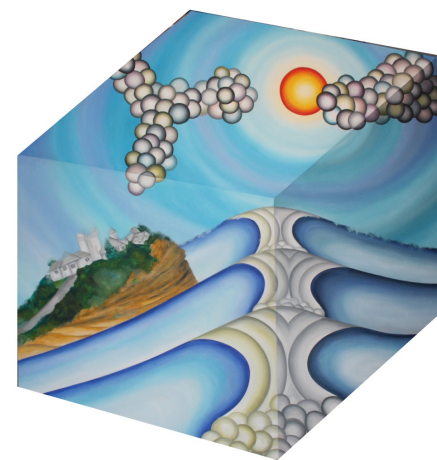
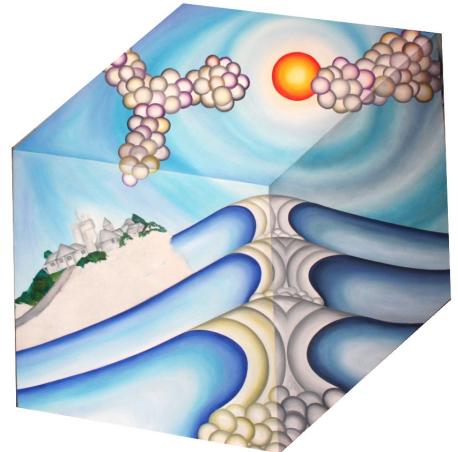
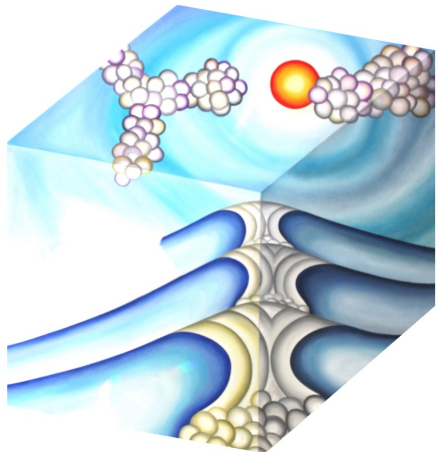
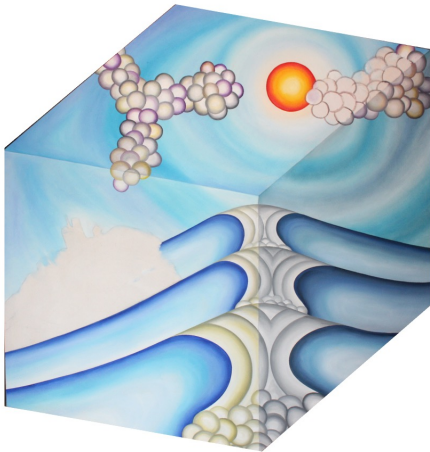
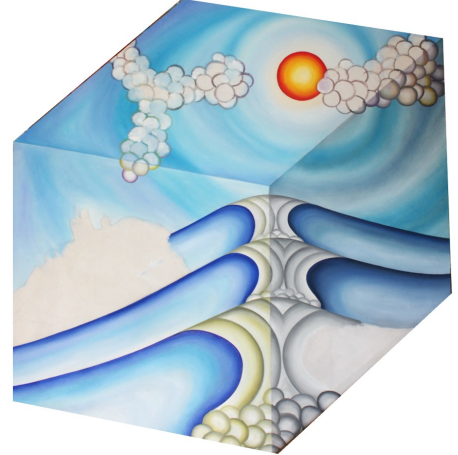
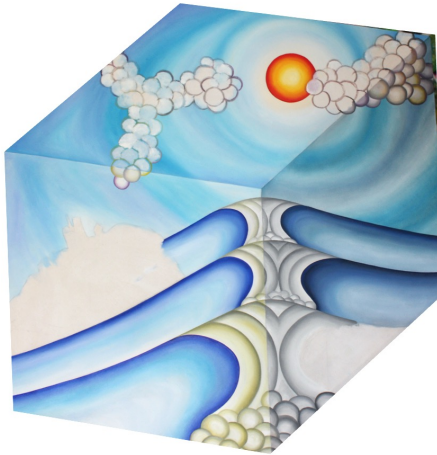
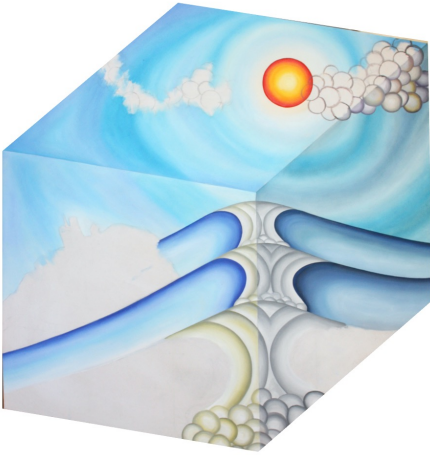
Lighthouse



Each picture in the exhibit is painted twice. These photos show the various stages of the first painting of Lighthouse. After the first painting the various parts are painted a second time.

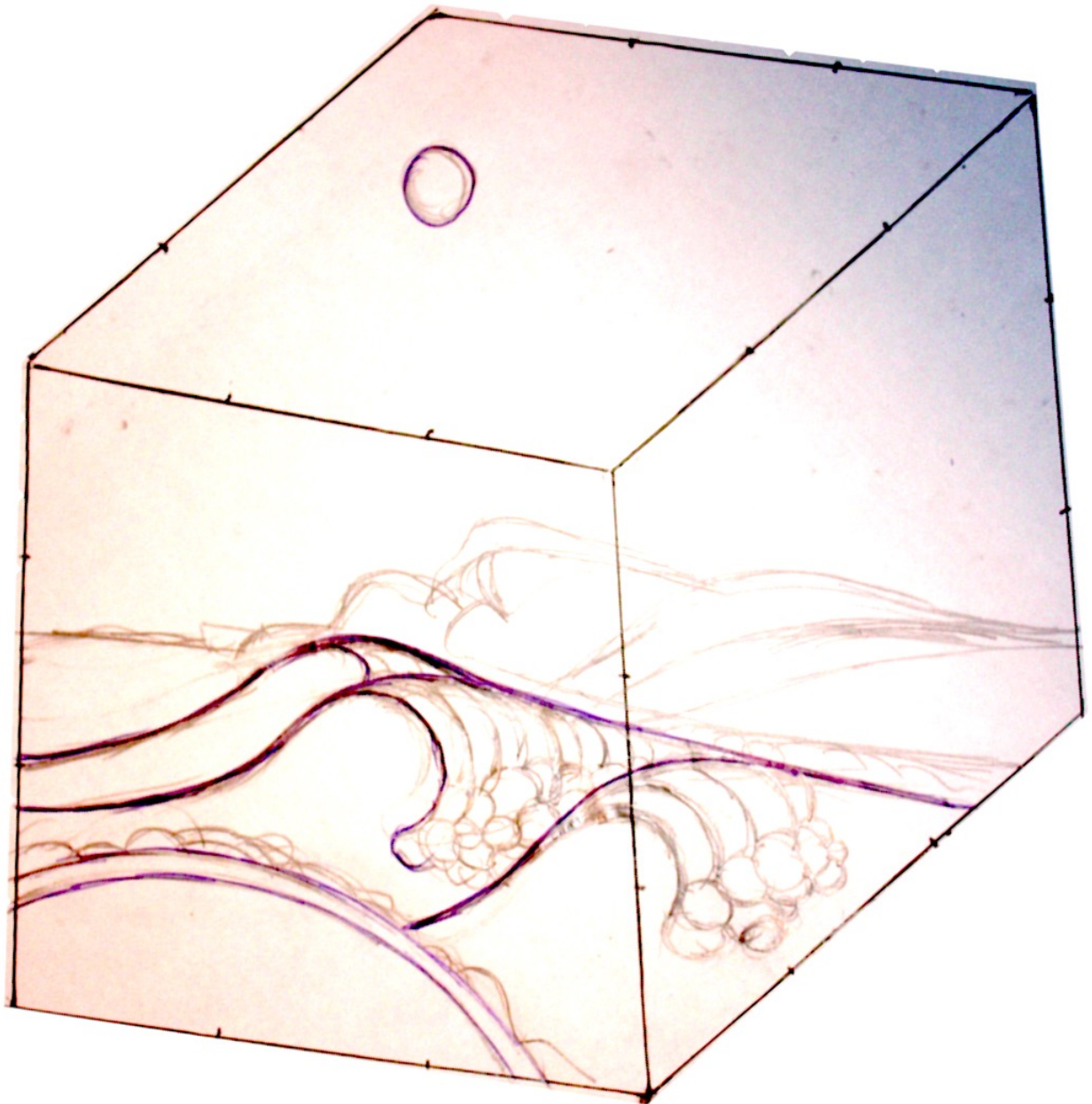


Each picture in the exhibit is painted twice. These photos show the various stages of the first painting of Shipwreck. After the first painting the various parts are painted a second time.

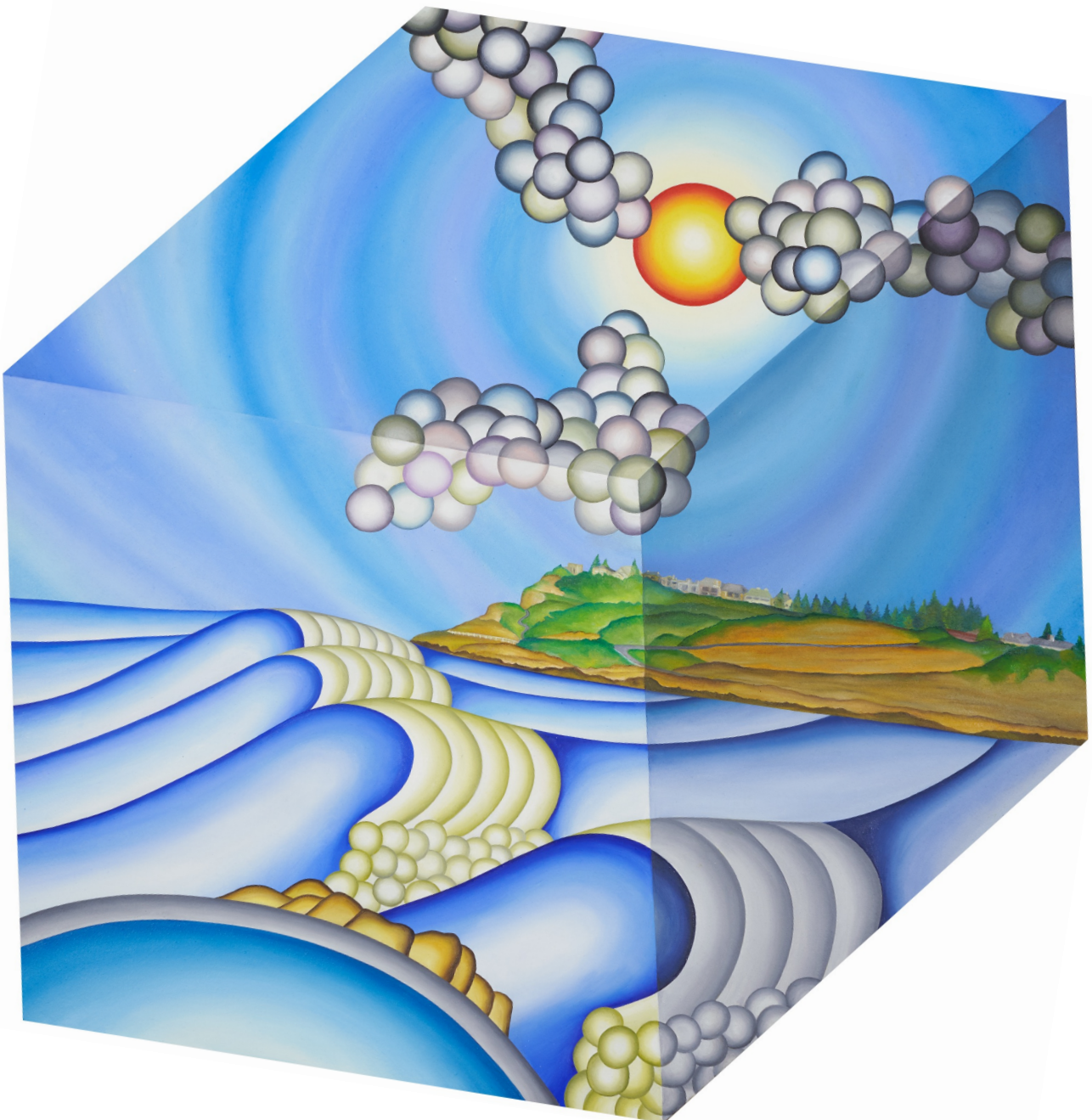


Pool

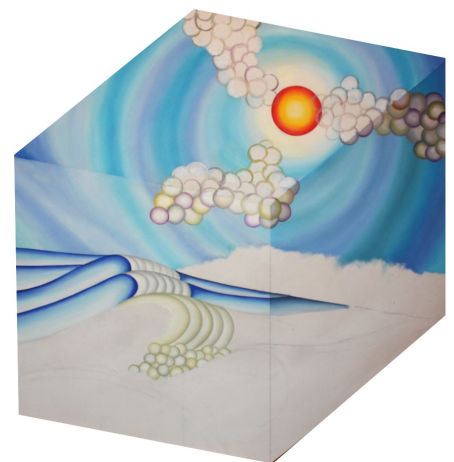
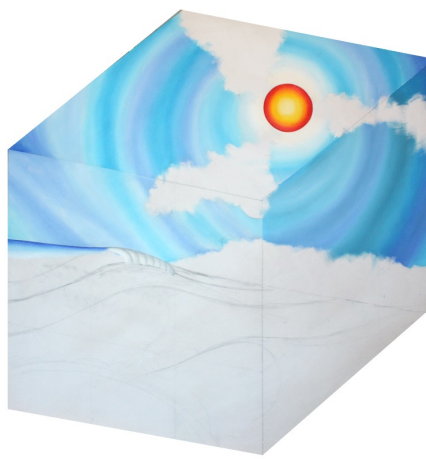
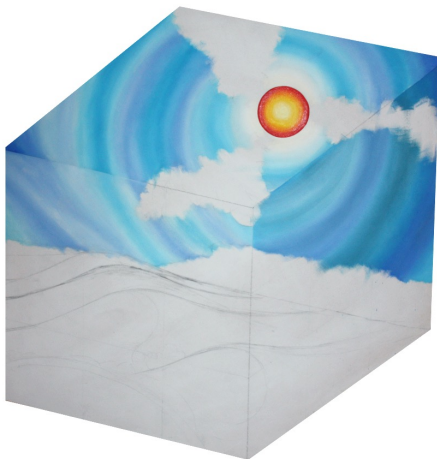
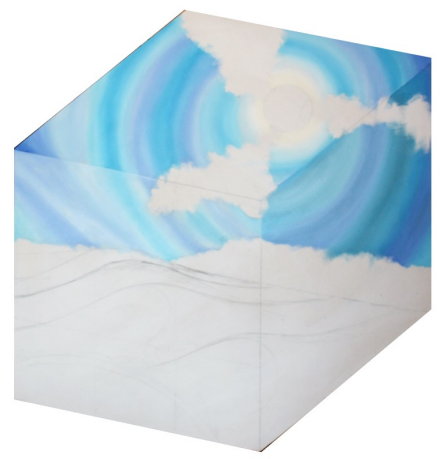
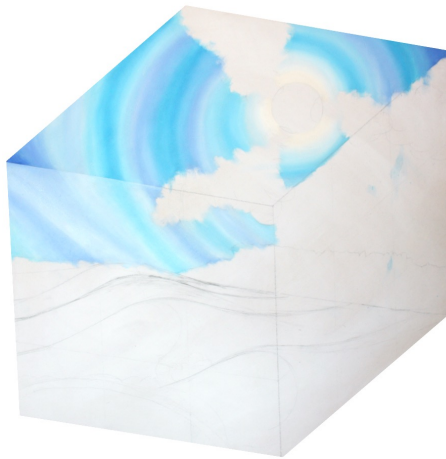
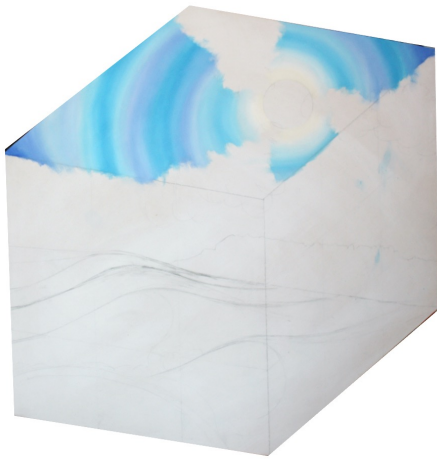
Based on the World Pool at the Northern end of Newcastle Beach and looking towards South Newcastle Beach



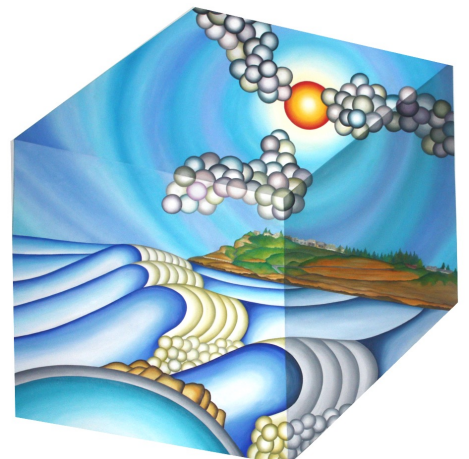
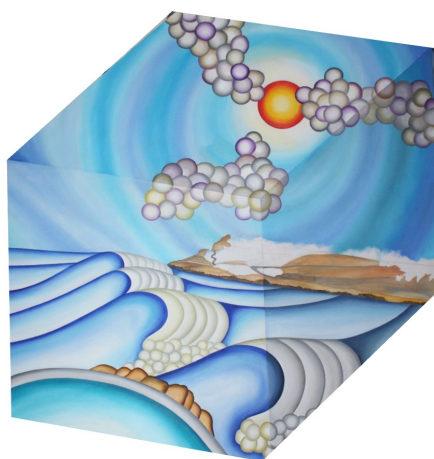
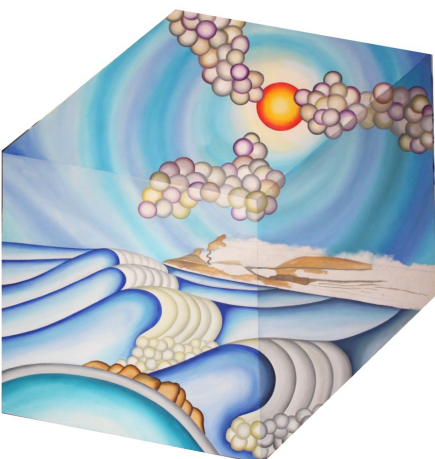
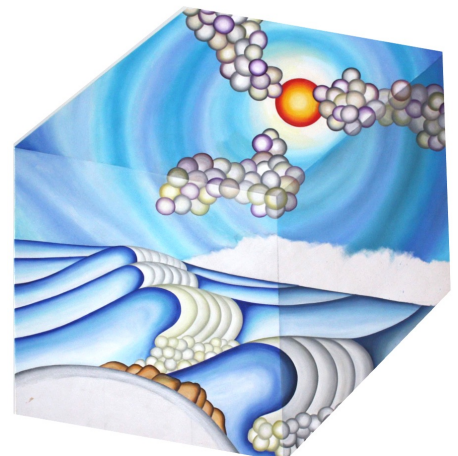
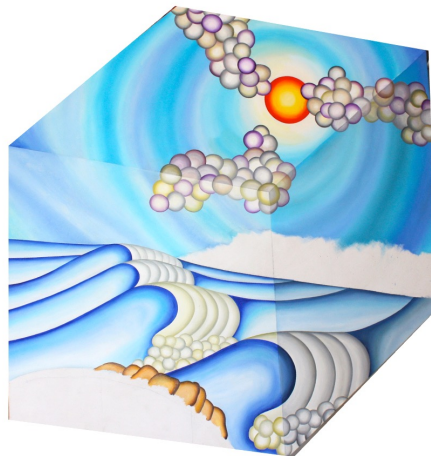
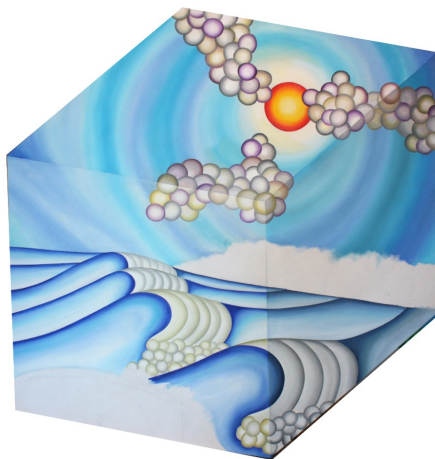
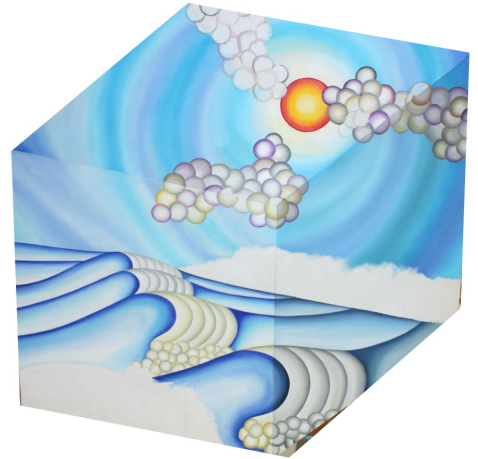
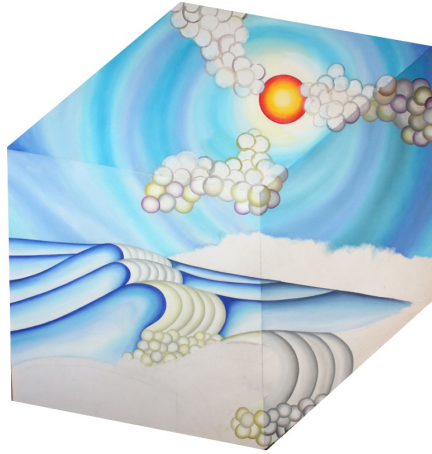
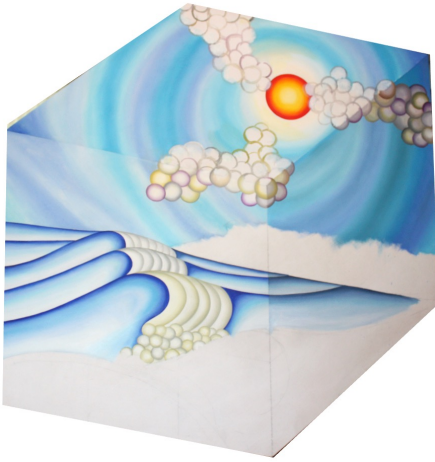
Pool



Each picture in the exhibit is painted twice. These photos show the various stages of the first painting of Pool. After the first painting the various parts are painted a second time.

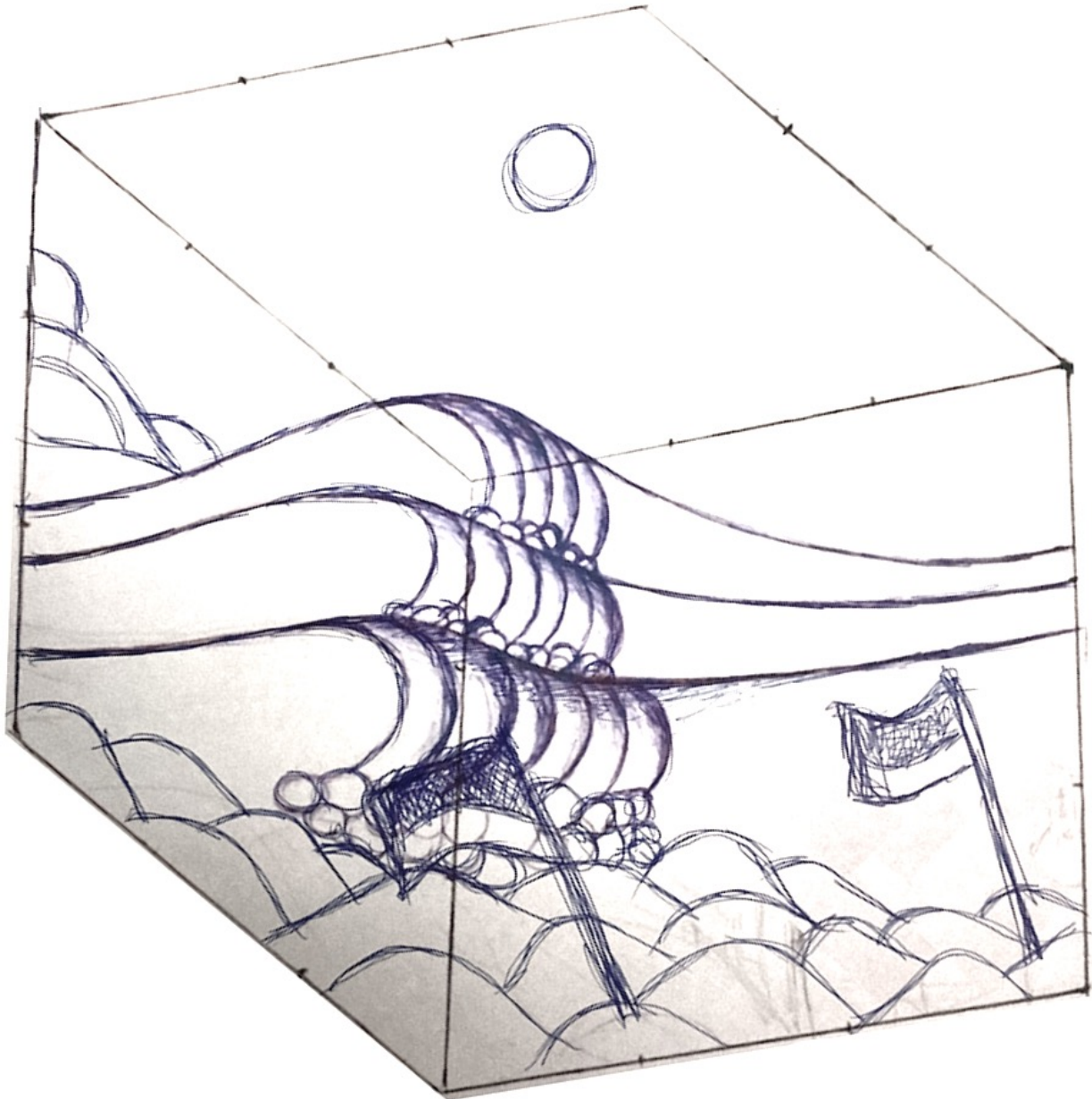


Each picture in the exhibit is painted twice. These photos show the various stages of the first painting of Shipwreck. After the first painting the various parts are painted a second time.

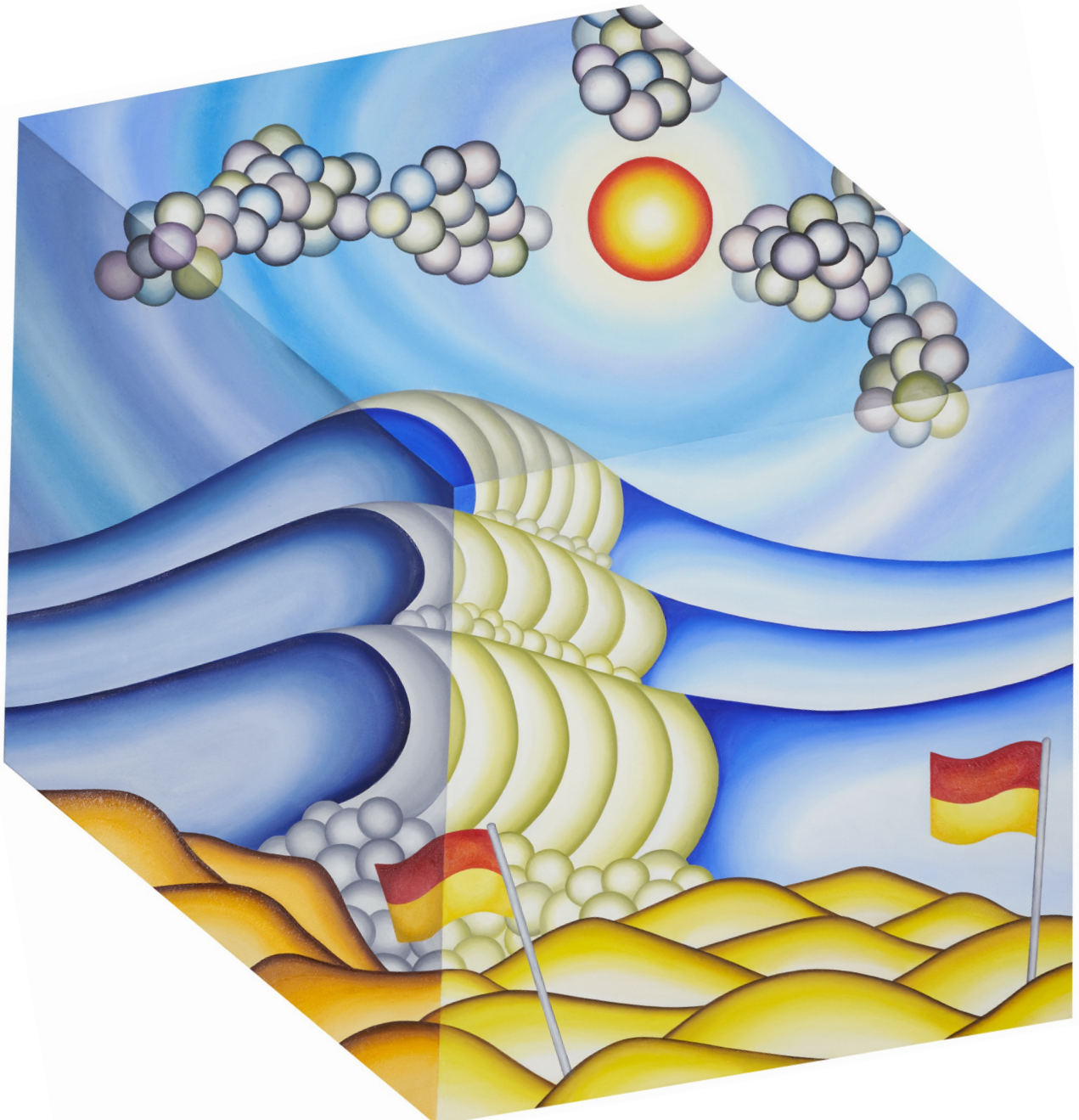


Flags

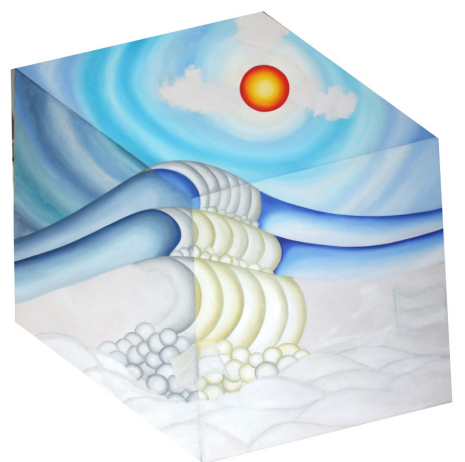
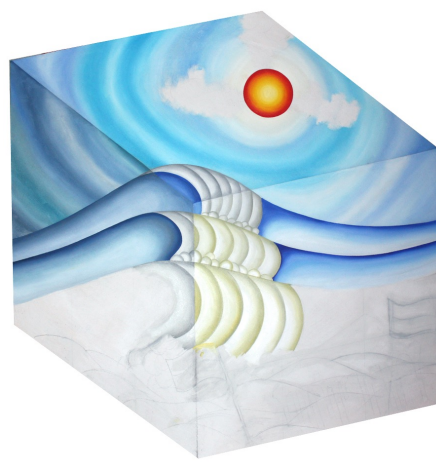
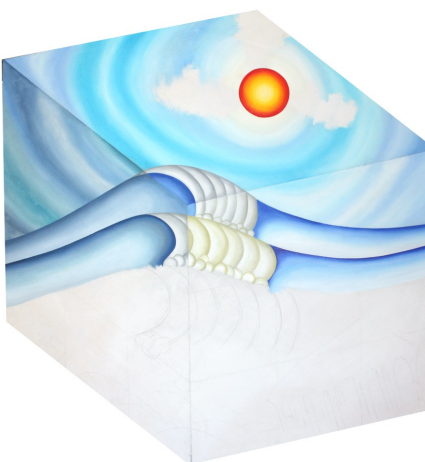
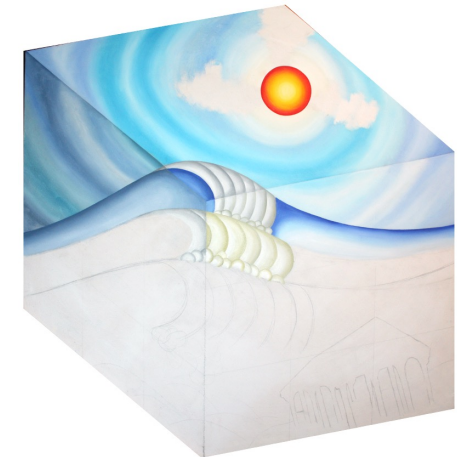
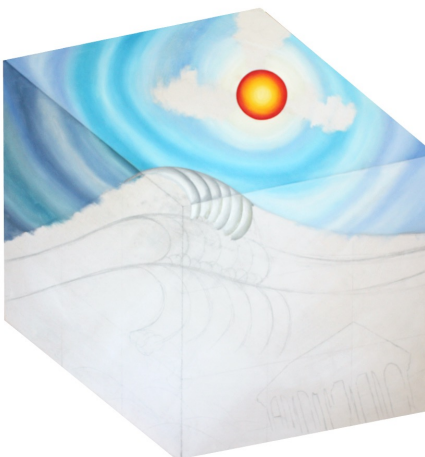
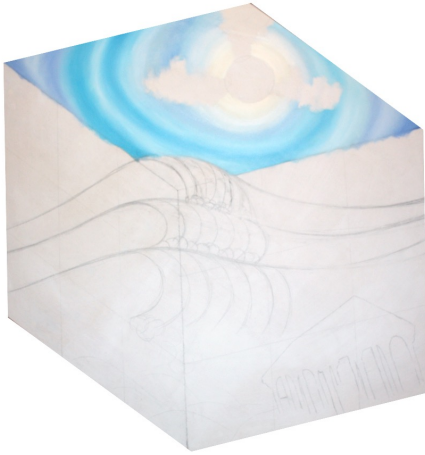
Based on the surf flags typically located in front of the Bar Beach Pavilion



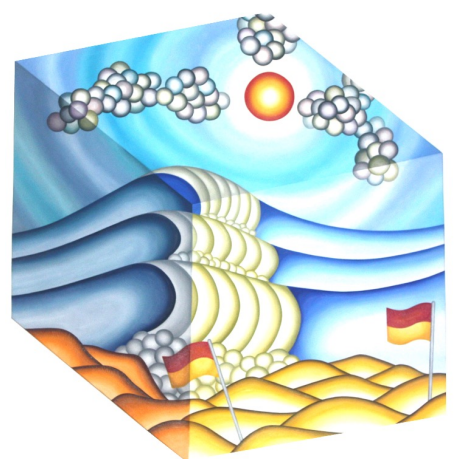
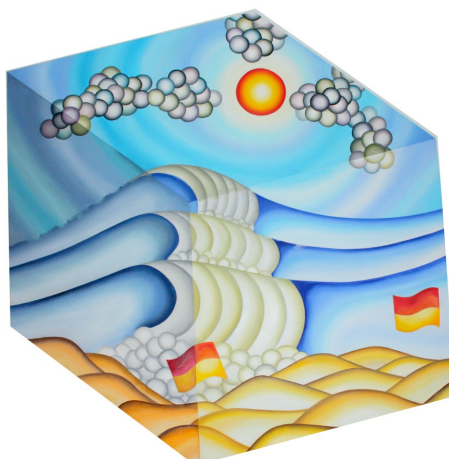
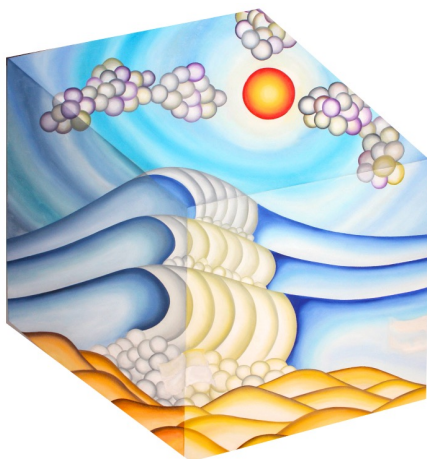
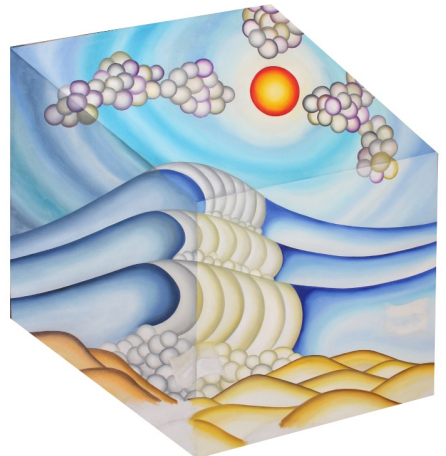
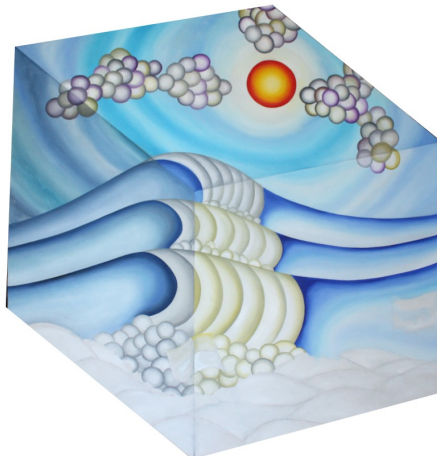
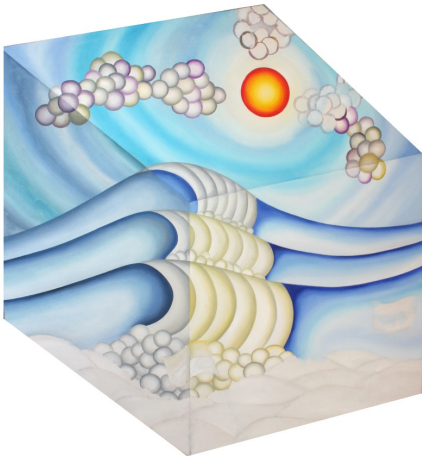
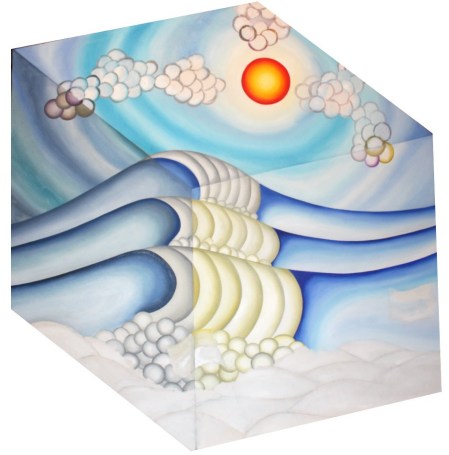
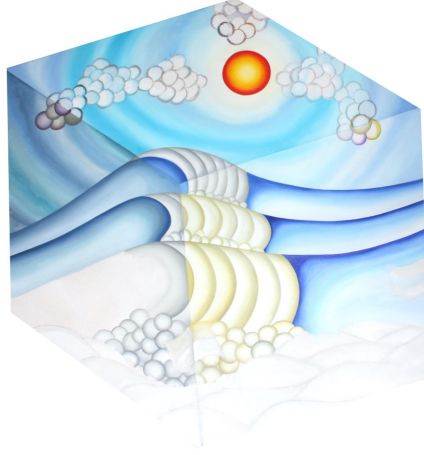
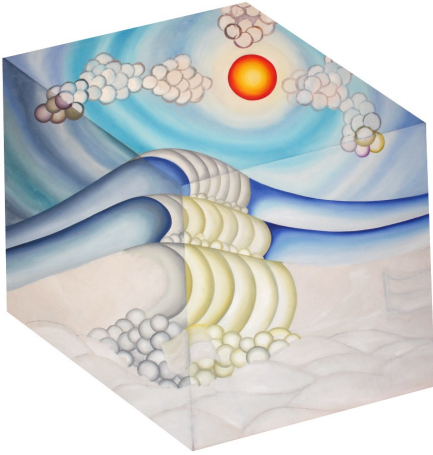
Flags



Each picture in the exhibit is painted twice. These photos show the various stages of the first painting of Flags. After the first painting the various parts are painted a second time.

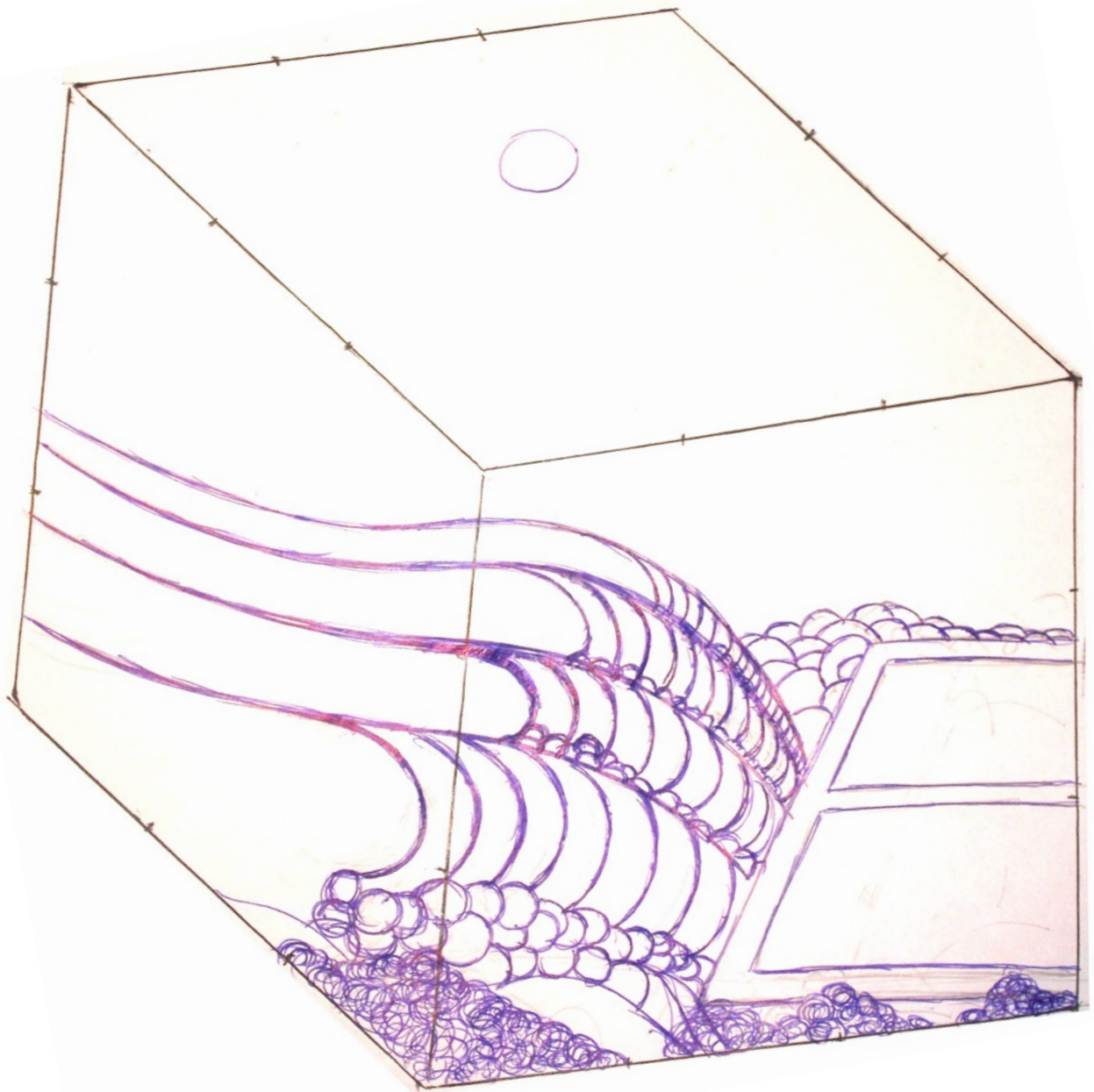


Each picture in the exhibit is painted twice. These photos show the various stages of the first painting of Shipwreck. After the first painting the various parts are painted a second time.

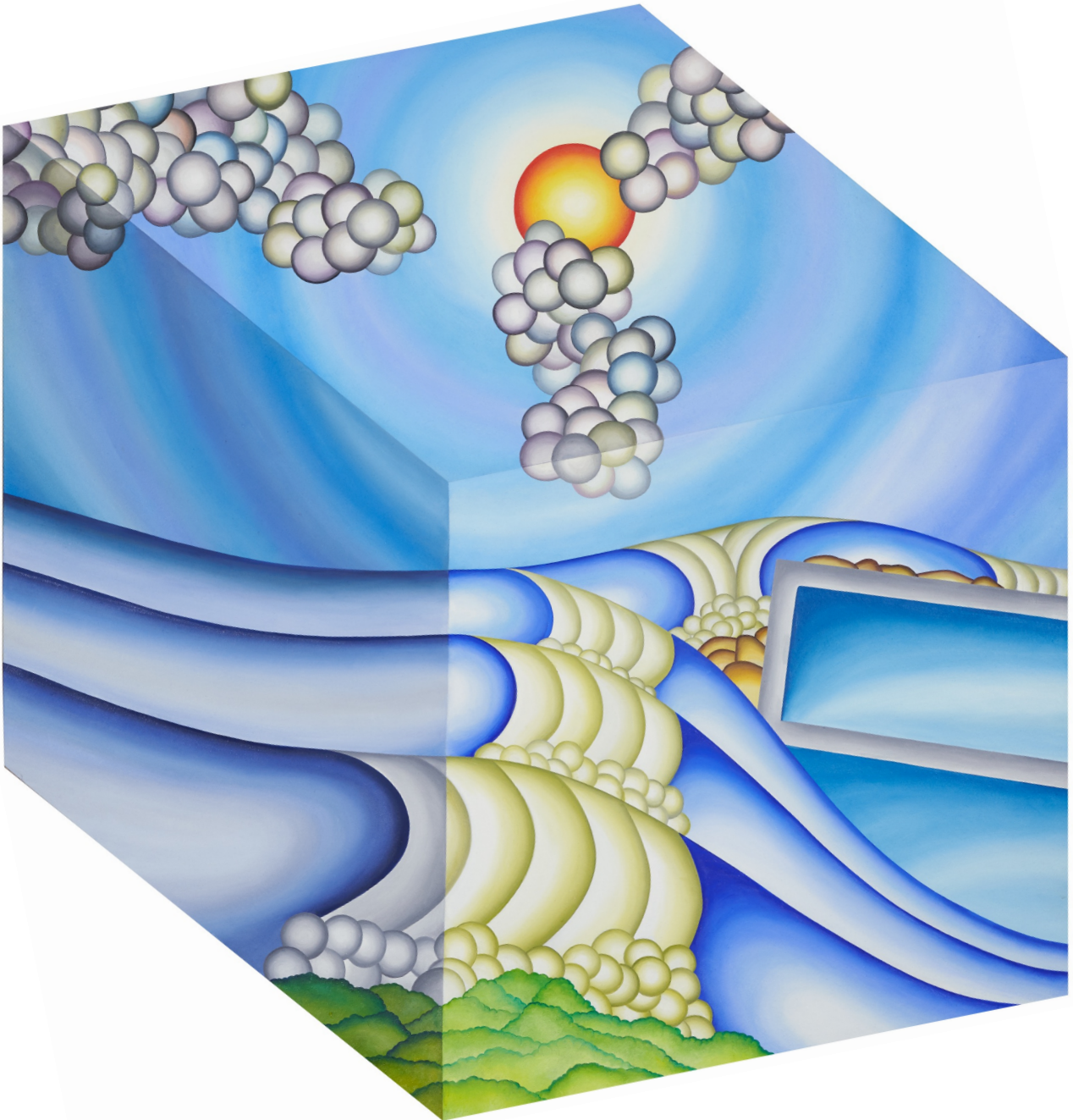


Baths

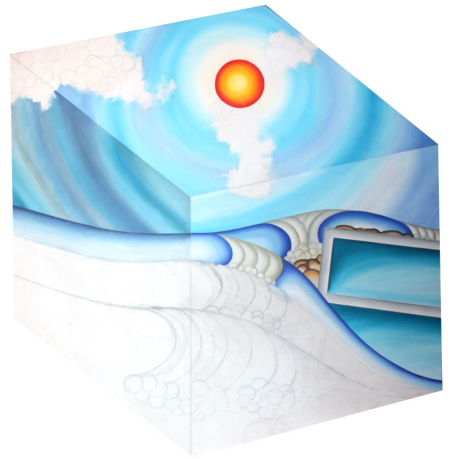
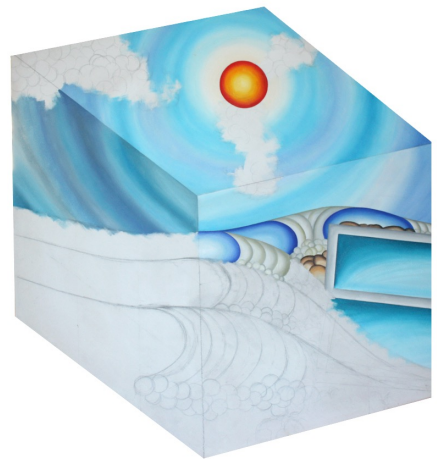
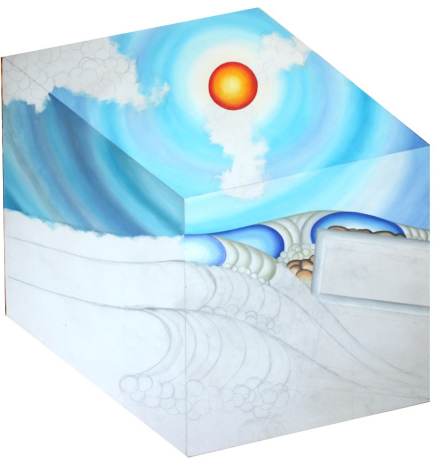
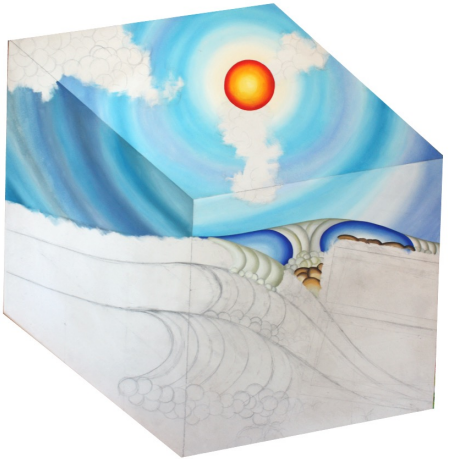
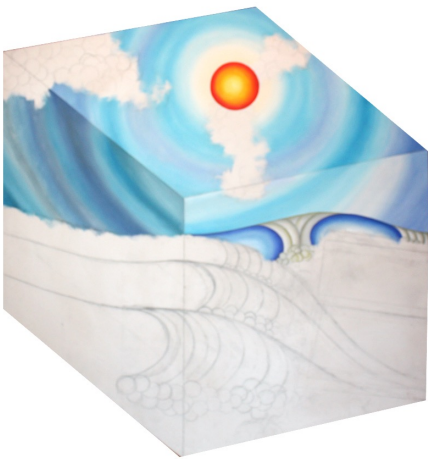
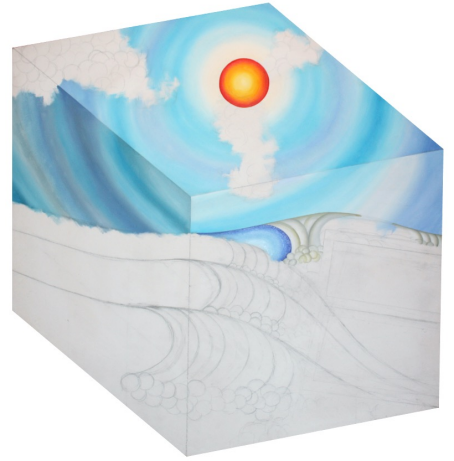
Based on the Baths at Merewether Beach



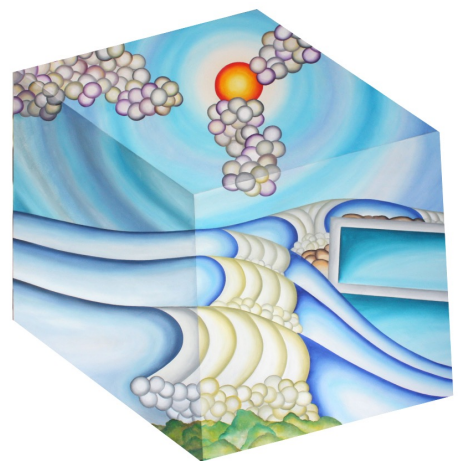
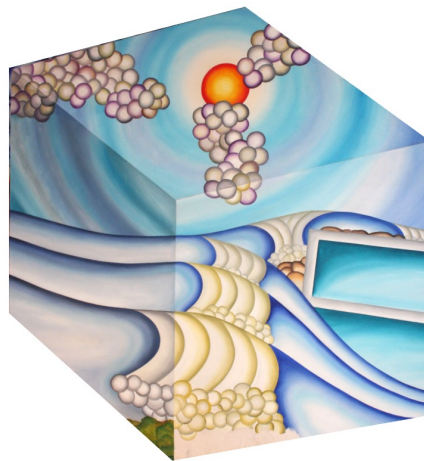
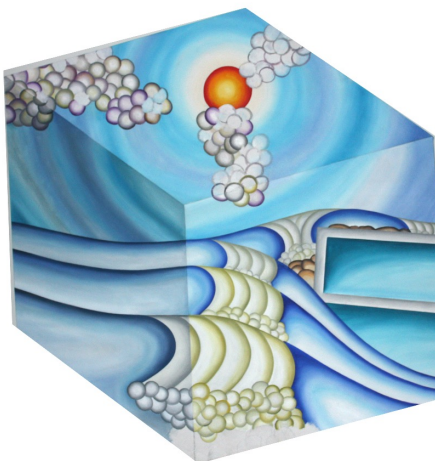
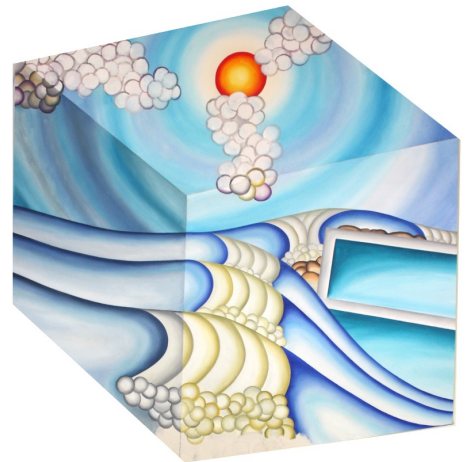
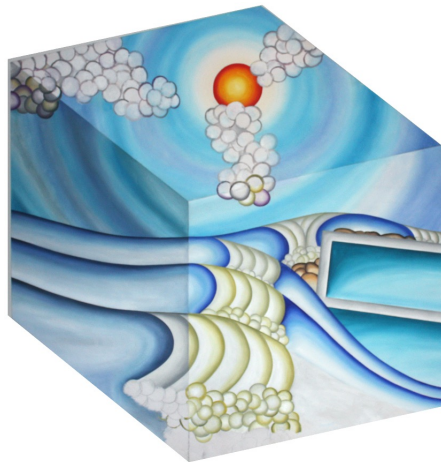
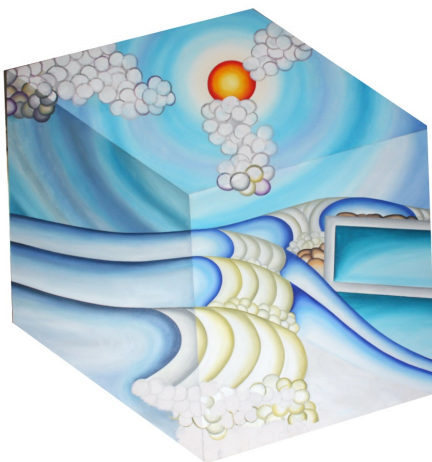
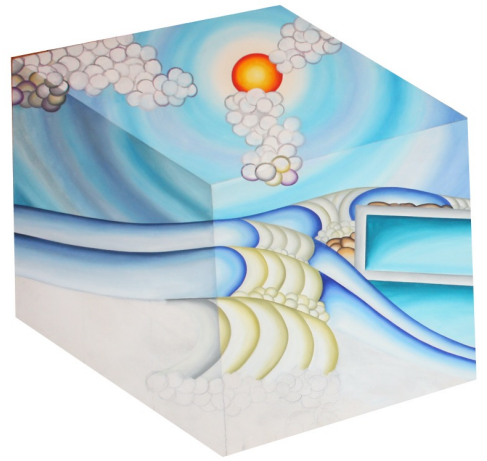
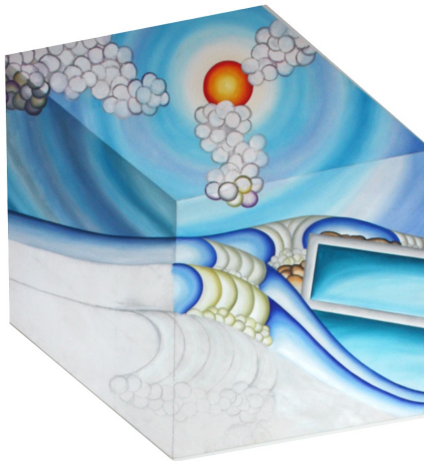
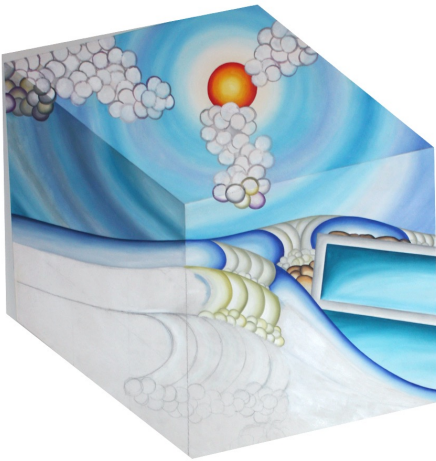
Baths

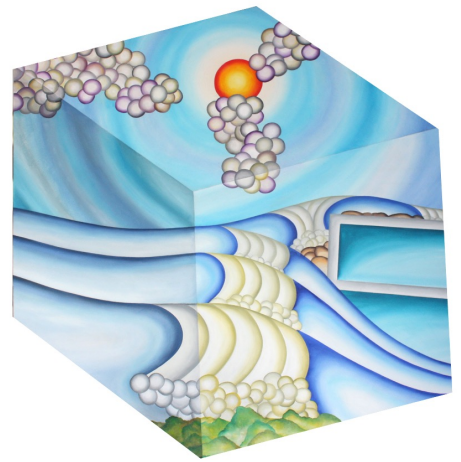
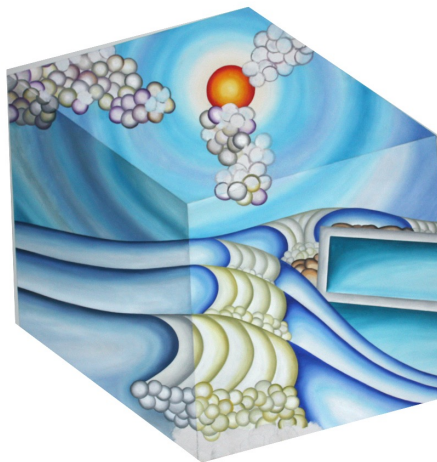
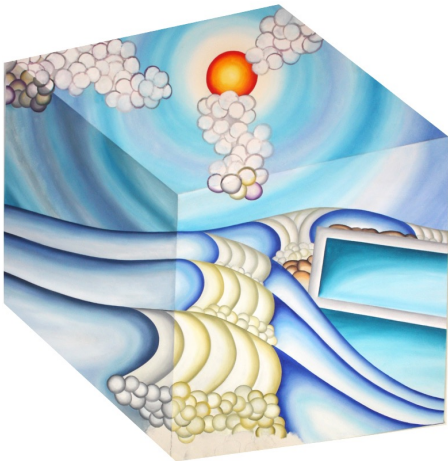
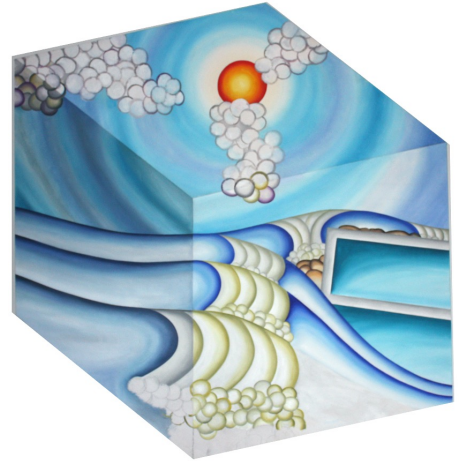
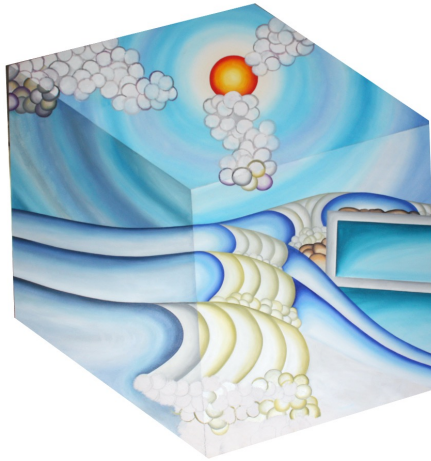
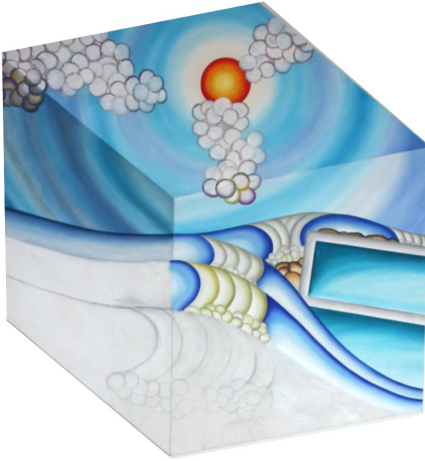
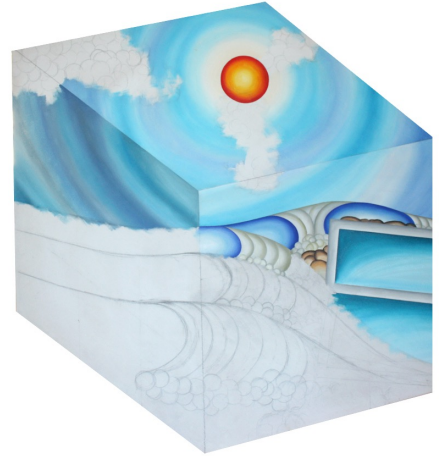
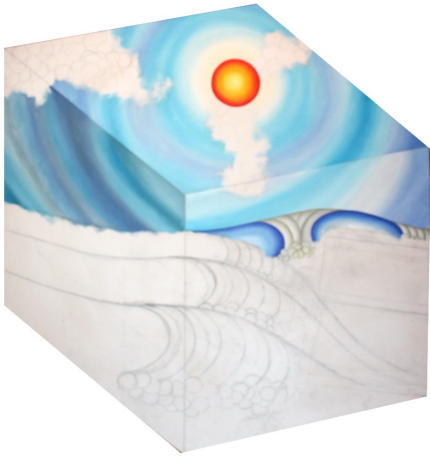
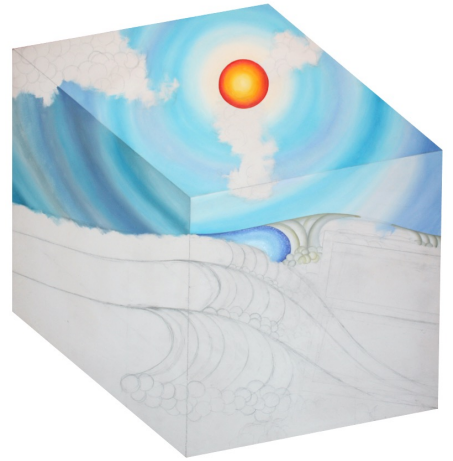


Each picture in the exhibit is painted twice. These photos show the various stages of the first painting of Baths. After the first painting the various parts are painted a second time.



Each picture in the exhibit is painted twice. These photos show the various stages of the first painting of Shipwreck. After the first painting the various parts are painted a second time.







My work tends to emerge at the intersection of art and science. My formal qualifications are actually in mathematics and computing. However, I have also been painting for around 45 years. There is a complementary nature to both my science and art, although I also see them as quite different, two very distinct ways for me to try and understand the world. I like to study how people think, how we make decisions and how we solve problems. These are interesting questions for both artists and scientists.

My pictures are conceptual in nature, trying to capture the images that appear inside my mind and make sense of the creative process that drives my art. I like to paint what I see inside my mind, not what I find on the outside. Of course, what I see on the outside informs what I see inside my mind and so sometimes parts of the real world find their way into my imaginary pictures.